

HITHORIZONS API DOCUMENTATION

1. API OVERVIEW

This technical guide will help you search the database and retrieve company data via the HitHorizons API.

2. COUNTRIES COVERAGE

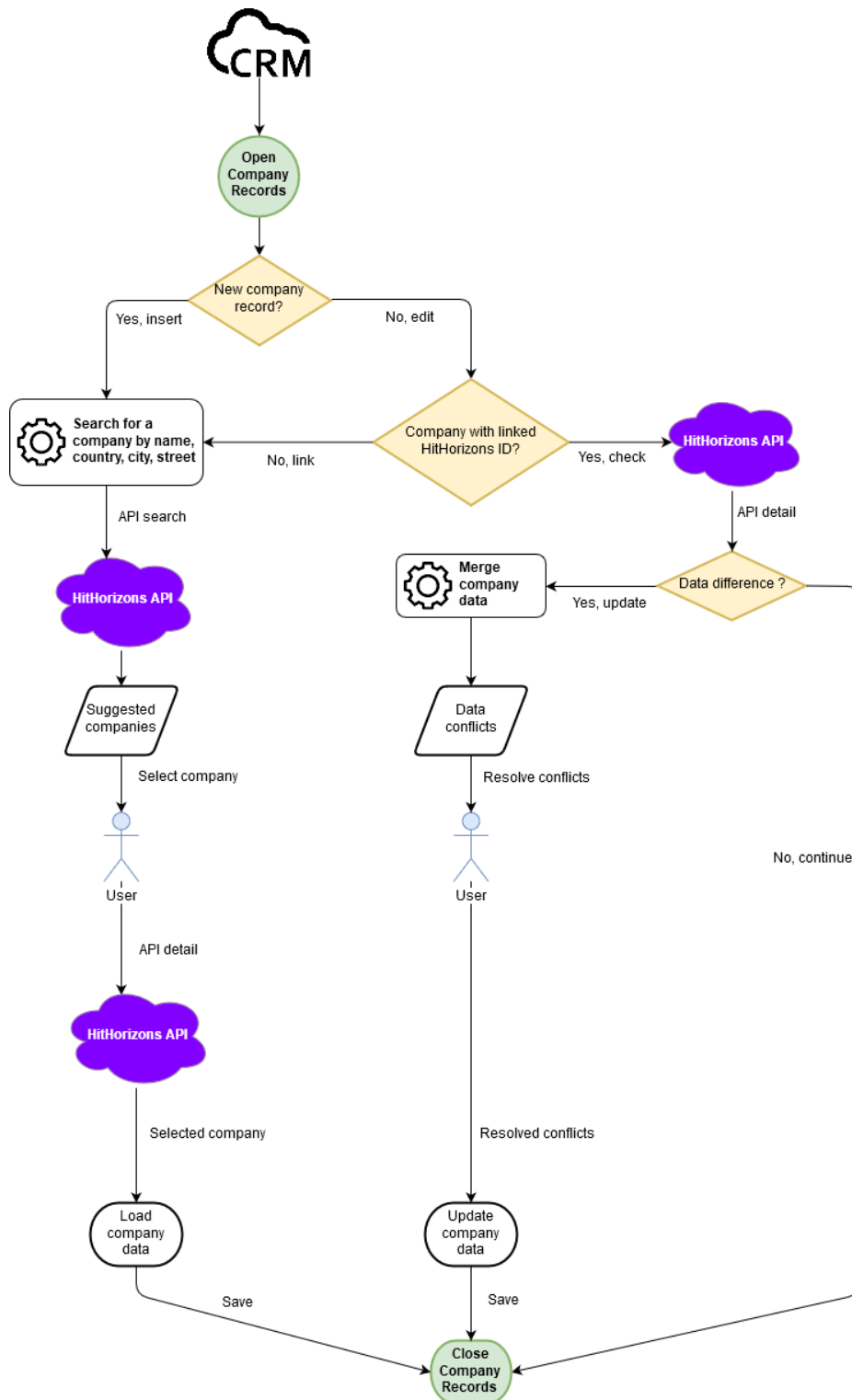
HitHorizons API provides data about companies from Europe. We provide analyses by country or by the following regions:

- **Balkan States:** Albania, Bosnia and Herzegovina, Bulgaria, Croatia, Kosovo, Montenegro, North Macedonia, Romania, Serbia, Slovenia
- **Baltic States:** Estonia, Latvia, Lithuania
- **Benelux & France:** Belgium, France, Luxembourg, Netherlands
- **DACH:** Austria, Germany, Liechtenstein, Switzerland
- **EU Eastern Partnership (selected countries):** Belarus, Moldova, Ukraine
- **Nordic Countries:** Denmark, Faroe Islands, Finland, Greenland, Iceland, Norway, Sweden
- **Offshore Countries:** Andorra, Cyprus, Gibraltar, Malta, Monaco, San Marino
- **Russian Federation:** Russian Federation
- **Southern Europe:** Greece, Italy, Portugal, Spain
- **UK & Ireland:** Ireland, United Kingdom
- **Visegrad Group:** Czech Republic, Hungary, Poland, Slovakia

[Data properties are described here](#) in detail.

3. HOW IT WORKS – USE CASE EXAMPLE

The following diagram shows the use case of API integration into a CRM system and the process of creating and updating a company record in the CRM system using the API.



4. GETTING STARTED

Get in touch with our team to obtain a subscription key. We provide free, time-limited trial access to test the API and evaluate the data in the API.

You'll receive access to the API testing interface where the API definition is available.

The API testing interface is available here: <https://api.hithorizons.com/swagger/index.html>.

5. API CONVENTIONS & LIMITS

While using the HitHorizons API, these basic rules apply:

- All requests need to be authenticated using an API key. The API key is sent in the HTTP header `Ocp-Api-Subscription-Key`.
- The responses are encoded as JSON objects.
- Response data is wrapped in an envelope containing the following fields:
 - `Success` [bool]: Indicates whether the call was successful.
 - `Error` [string]: In case of an error, contains the error description.
 - `Result`: Actual data returned from the API.
- The API usage is subject to several limits for each subscription:
 - Minute rate limit.
 - This limit is applied in a sliding window. This means that before each call, the number of calls in the past 60 seconds needs to be lower than the limit.
 - HTTP header `X-HHAPI-Rate-Limit-Usage` contains the usage in the one-minute window.
 - HTTP header `X-Rate-Limit-Remaining-Calls` contains the number of remaining calls in the one-minute window.
 - Daily API call limit.
 - This limit is applied each calendar day and is reset at midnight UTC.
 - HTTP header `X-HHAPI-Limit-Daily` contains the daily limit applied for the subscription.
 - HTTP header `X-HHAPI-Usage-Daily` contains the number of API calls in the current day.
 - Certain endpoints are not subject to this limit, e.g., endpoints related to Screener and Reports functionality, which are subject to different limitations.
 - Monthly limit.

- This limit is applied each calendar month and is reset at midnight on the 1st of each month.
- HTTP header `X-HHAPI-Limit-Monthly` contains the monthly limit applied for the subscription.
- HTTP header `X-HHAPI-Usage-Monthly` contains the number of API calls in the current month.
- Certain endpoints are not subject to this limit, e.g., endpoints related to Screener and Reports functionality, which are subject to different limitations.
- Yearly limit.
 - This limit is applied for a one-year-long period which is reset on a date, which is custom for each subscription.
 - HTTP header `X-HHAPI-Limit-Yearly-Reset-Date` contains the upcoming yearly limit reset date in the yyyy-MM-dd format.
 - HTTP header `X-HHAPI-Limit-Yearly` contains the yearly limit applied for the subscription.
 - HTTP header `X-HHAPI-Usage-Yearly` contains the number of API calls in the current period.
 - Certain endpoints are not subject to this limit, e.g., endpoints related to Screener and Reports functionality, which are subject to different limitations.
- The above limits depend on your package.
- The daily limit for trial subscriptions is 300 requests.

5.1. Response after exceeding the rate limit

After exceeding the rate limit, the following response is returned:

```
HTTP/1.1 429 Too Many Requests
Content-Type: application/json
Retry-After: 12
X-Rate-Limit-Remaining-Calls: 0
X-HHAPI-Rate-Limit-Usage: 30

{
  "statusCode": "429",
  "message": "Rate limit is exceeded. Try again in 12 seconds.",
  "linkText": null,
  "link": null,
  "popupTitle": null,
  "popupMessage": null,
  "popupLinkText": null,
  "popupLink": null,
}
```

```
"subscriptionId": "5efa324543fd361210d2e76a"
}
```

The response indicates that the client cannot access the API for a period indicated in the `Retry-After` header (in seconds). A textual description of the issue is returned in the `message` field in the response body.

After receiving this response, the `message` should be displayed to the user. Subsequent requests will succeed once the `Retry-After` period elapses.

5.2. Response after exceeding the daily, monthly, or yearly limit

After exceeding the daily, monthly, or yearly limit, the following response is returned:

```
HTTP/1.1 403 Quota Exceeded (monthly)
X-Rate-Limit-Remaining-Calls: 26
X-HHAPI-Rate-Limit-Usage: 4
X-HHAPI-Limit-Yearly-Reset-Date: 2024-01-01
X-HHAPI-Limit-Yearly: 100000
X-HHAPI-Limit-Monthly: 10000
X-HHAPI-Limit-Daily: 1000
X-HHAPI-Usage-Yearly: 41332
X-HHAPI-Usage-Monthly: 10000
X-HHAPI-Usage-Daily: 135

{
  "statusCode": "403",
  "message": "You have exceeded your HitHorizons monthly API quota.",
  "linkText": "Request Quota Increase »",
  "link":
"mailto:sales@hithorizons.com?subject=HitHorizons+Free+API+Quota+Exceeded+5efa324543fd361210d2e76a",
  "popupTitle": "HitHorizons API Quota Exceeded",
  "popupMessage": "You have exceeded your monthly API quota for HitHorizons: 10000 requests. To maintain continuous access to data on European companies, request an API limit increase at sales@hithorizons.com. monthly-by-value-subscription[5efa324543fd361210d2e76a] (10000) ",
  "popupLinkText": "Request Quota Increase",
  "popupLink":
"mailto:sales@hithorizons.com?subject=HitHorizons+Free+API+Quota+Exceeded+5efa324543fd361210d2e76a",
  "subscriptionId": "5efa324543fd361210d2e76a"
}
```

- The status code is 403 (Forbidden).

- The status message indicates that the quota was exceeded. The message always starts with "Quota Exceeded", with additional information about which quota was exceeded appended to the message:
 - Quota Exceeded (daily)
 - Quota Exceeded (monthly)
 - Quota Exceeded (yearly)
 - Quota Exceeded (daily trial)
- The HTTP headers contain the daily usage and limits, as described above.
- The body contains the following fields:
 - `statusCode`: 403
 - `message`: Message to display to the user.
 - `linkText`: Label of a link or button to be shown next to the message.
 - `link`: Destination URL to navigate to after clicking the link/button with the above label.
 - `popupTitle`: Title of a popup window to display to the user.
 - `popupMessage`: Message to be shown to the user in a popup window.
 - `popupLinkText`: Label of a link or button to be shown next to the message to the user in a popup window.
 - `popupLink`: Destination URL to navigate to after clicking the link/button in a popup window with the above label.
 - `subscriptionId`: ID of the subscription. This can be used for identifying the customer account.
- The texts can contain the placeholder `{integrationName}`, which should be replaced by the software where HitHorizons API is integrated, e.g., Dynamics 365.
- The texts can contain newline characters (`\n`) which should be interpreted and shown as new lines.
- The messages returned are relevant for the quota or limit that was exceeded. They will be different for daily/monthly quotas and license expiration.
- The body object structure will always be as described here.

After receiving this response, the `message` and the `linkText` should be displayed to the user. The `linkText` should be displayed as a hyperlink to the website in the `link`.

The `popupMessage` with the `popupTitle` should be displayed to the user in the pop-up window as soon as the quota is exceeded. The `popupLinkText` serves as a button on a pop-up window and is linked to `popupLink`.

6. API ENDPOINTS

You can retrieve the company data from HitHorizons database by using these API endpoints:

Starter	Grow	Pro
Starter	Grow	Pro
Starter	Grow	Pro
Starter	Grow	Pro
Starter	Grow	Pro

Starter	Grow	Pro
---------	------	-----

Starter	Grow	Pro
---------	------	-----

Starter	Grow	Pro
---------	------	-----

Starter	Grow	Pro
---------	------	-----

Grow	Pro
------	-----

Grow	Pro
------	-----

Grow	Pro
------	-----

Grow	Pro
------	-----

Grow	Pro
------	-----

Grow	Pro
------	-----

Starter	Grow	Pro
---------	------	-----

Starter	Grow	Pro
---------	------	-----

Starter	Grow	Pro
---------	------	-----

Starter	Grow	Pro
---------	------	-----

Starter	Grow	Pro
---------	------	-----

Starter	Grow	Pro
---------	------	-----

Starter	Grow	Pro
---------	------	-----

- [/Company/Detail](#) – Company profile including Industry analyses.
- [/Company/DetailBasic](#) – Company profile.
- [/Company/DetailBasicMulti](#) – Multiple company profiles.
- [/Company/Search](#) – Company search.
- [/Company/SearchUnstructured](#) – Company search using an unstructured query.
- [/Company/SearchLite](#) – Lightweight company search with limited data.
- [/Company/SearchLiteUnstructured](#) – Lightweight company search with limited data using an unstructured query.
- [/Company/Suggestions](#) – Company search using name only, returns name suggestions when no matches are found.
- [/Company/CodeLists](#) – Code lists for values used in the API.
- [/Company/CodeLists/LocalActivityCodes](#) – Code lists for local activity code for individual activity code types.
- [/Analytics/Sector](#) – Industry analyses.
- [/Screener/List](#) – Screener company data
- [/Screener/FilterOptions](#) – Options for screener filters
- [/Screener/FilterOptions/StateProvince](#) – Options for the StateProvince screener filter
- [/Screener/Export](#) – Request screener export.
- [/Screener/GetExport](#) – Retrieve screener export information.
- [/Screener/GetExports](#) – List screener exports.
- [/Reports/SearchCompanies](#) – Search companies to order reports or documents.
- [/Reports/SearchProducts](#) – Search available products for a company.
- [/Reports/OrderProduct](#) – Order a product.
- [/Reports/GetOrder](#) – Get ordered product details.
- [/Reports/GetOrders](#) – Get list of product orders.
- [/Reports/GetCountries](#) – Get list of countries with available providers for ordering reports or documents.
- [/Reports/GetCreditInfo](#) – Get information about available credit.

6.1. ENDPOINT `/Company/Detail`

Starter

Grow

Pro

This endpoint provides the data of a single company identified by HitHorizons ID. The response contains complete data about a single company, including industry information.

This endpoint is also available under alternative path `/Company/Get`.

6.1.1. Request parameters

The following parameter is required to make a query. You can obtain the HitHorizons ID from the `/Company/Search` endpoint, the `/Company/SearchUnstructured` endpoint or the `/Company/Suggestions` endpoint.

HitHorizonsId	string	A unique company identification number assigned by HitHorizons.
ValidateVat	bool	When true, the VAT identifier will get validated during the request. See section 6.1.5 below for details.
ContactFinder	bool	When true, Contact Finder service will attempt to retrieve contact information for the company online. See section 6.1.6 below for details.
ProductKeywords	bool	When true, Product keywords will be included in the response, if available for the requested company.

6.1.2. Response properties

The following tables show the complete list of retrieved properties related to a single company in the response and their descriptions. To interpret the values of the properties, refer to the documents below:

- [HitHorizons API Code lists](#) - including activity code types, currency codes, legal structure code list, national ID type code list, industry classification code list, SIC activity code list.

CompanyDetailResult		
HitHorizonsId	string	A unique company identification number assigned by HitHorizons.

DUNSNumber	string	9-digit non-indicative identification number assigned by D&B company.
CompanyName	string	Official name of the company
CompanySecondaryName	string	Secondary name, trade name or brand of the company, if used
AddressStreetLine1	string	Physical location of the company as referred to by a local authority (e.g., Business register), generally stated in the local language.
AddressStreetLine2	string	Physical location of the company as referred to by a local authority (e.g., Business register), generally stated in the local language.
PostalCode	string	Postal or zip code for the physical location.
City	string	Name of the city where the company is located. Generally, in the local language.
StateProvince	string	Name of the state/province, or county where the company is located. Generally, in the local language.
Country	string	English name of the country where the business is located.
CountryCode	string	ISO 3166-1 alpha-2 code of the country where the business is located.
NationalId	string	Company identification number officially assigned and used in some countries for company incorporation and tax collection.
NationalIdType	string	Code that identifies the type of national ID number system used, for example '00012' = CRO, '00014' = Siren. A table describing each code value is available here.
TaxId	string	Company identifier for taxation purposes.
VatId	string	Company identifier for VAT purposes.

VatValidationResult	string	<p>When VAT validation was requested, the result of the validation. One of the following:</p> <ul style="list-style-type: none"> • valid – the VAT identifier in VatId was validated in an external service and it is currently valid • invalid – the VAT identifier in VatId was validated in an external service and it is currently invalid • error: [textual description of the error] – an error occurred during the validation <p>When VAT validation was not requested, the value in this field is null.</p>
VatValidationDate	date	<p>When VAT validation was requested and the validation completed successfully, contains the date when the validation was performed The API returns only the current date in this field.</p> <p>When VAT validation was not requested, the value in this field is null.</p>
SICText	string	<p>Narrative description in English of the operations or activities of the business also known as line of business. Relates to the four-digit primary SIC code which is the 1987 U.S. government code.</p>
SICCode	string	<p>Standard industrial classification code system categorizes business establishments according to the type of business activities. The SIC code of a parent/ultimate may include the activities of its subsidiaries. Some of the countries use different industrial classification (e.g., NACE). All inputs are converted to SIC Code as closely as possible.</p>
Industry	string	<p>Code of the SIC division, e.g., A - Agriculture, forestry and fishing. A table of code values is available here.</p>
LocalActivityCode	string	<p>This code represents the locally used activity code from the system indicated by the value in the field LocalActivityCodeType.</p>
LocalActivityCodeType	string	<p>System used for the local activity, for example NACE, UK SIC NAF, etc. A table of code values is available here.</p>
LocalActivityText	string	<p>English description of the local activity, when available. Relates to the LocalActivityCode.</p>

EstablishmentOfOwnership	integer	A four-digit number representing the year that current ownership took control, or the incorporation year if no control change took place.
SalesLocal	double	Annual sales for the business in local currency. See currency code to determine the currency used. Signed decimal field.
LocalCurrency	string	Code indicating the annual sales currency. A reference table is available here . For example, '0620' = Czech koruna
SalesAccuracyIndicator	string	A code value which describes the reliability of the annual sales figure. 0 - actual 1 - low end of a range 2 - estimated, or not available when sales value is zero 3 - modeled blank - not available when SalesLocal equals 0 or is unknown.
SalesUSD	double	Sales for the business in U.S. dollars. The currency exchange rate is updated once a year. Signed decimal field.
SalesEUR	double	Sales for the business in Euro. The currency exchange rate is updated once a year. Signed decimal field.
HitHorizonsSalesAnalysis	SalesSector array	Analyses based on data on sales with different views on the market size and company size. Analyses contain various metrics – median, min, max.
EmployeesNumber	integer	The number of employees in the company.
EmployeesNumberAccuracyIndicator	string	A code value which describes the reliability of the number of employees. 0 - actual 1 - low end of the range 2 - estimated, or not available when the number of employees is zero 3 - modeled blank - not available when EmployeesNumber equals 0 or is unknown.
EmployeesNumberLocal	integer	The number of employees at this location.

EmployeesNumberLocalAccuracyIndicator	string	A code value which describes the reliability of the number of employees at this location. 0 - actual 1 - low end of the range 2 - estimated, or not available when the number of employees is zero 3 - modeled blank - not available when EmployeesNumberLocal equals 0 or is unknown.
EmployeesNumberTotal	integer	The total number of employees in the business.
EmployeesNumberTotalAccuracyIndicator	string	A code value which describes the reliability of the number of employees. 0 - actual 1 - low end of the range 2 - estimated, or not available when the number of employees is zero 3 - modeled blank - not available when EmployeesNumberTotal equals 0 or is unknown.
HitHorizonsEmployeesAnalyses	EmployeeSector array	Analyses based on data on the number of employees in companies, with different views on the market size and company size. Analyses contain various metrics – median, min, max.
CompanyType	integer	Legal status of this company. Table is available here.
LocationType	integer	This code indicates whether the business is: 0 = Single Location - no other entities report to it 1 = Headquarter/Parent - branches and/or subsidiaries report to it 2 = Branch - secondary location to a headquarter Note: It is possible to have a single location subsidiary or a headquarter subsidiary. A headquarters can also be a parent with subsidiaries. The code is blank when not available.
Websites	string array	Addresses of the websites associated with the company.
Emails	string array	Email contacts associated with the company.
EmailDomains	string array	Domains of the email contacts associated with the company.

		The leading at-sign (@) is included in the domain text.
Phones	string array	Phone contacts associated with the company.
Website	string	Address of the first website associated with the company.
EmailDomain	string	Domain of the first email contact associated with the company. The leading at-sign (@) is included in the domain text.
LinkedInURLs	string array	URLs of the company profile at LinkedIn.
FacebookURLs	string array	URLs of the company profile at Facebook.
InstagramURLs	string array	URLs of the company profile at Instagram.
TikTokURLs	string array	URLs of the company profile at TikTok.
XURLs	string array	URLs of the company profile at X.
YouTubeURLs	string array	URLs of the company channel at YouTube.
GitHubURLs	string array	URLs of the company profile at GitHub.
ProductKeywords	string array	When ProductKeywords request parameter was set to true, contains a list of Product Keywords associated with the company, if available.
HitHorizonsCompanyProfileURL	string	URL of the company profile at HitHorizons.com.
HitHorizonsContactFinderURL	string	URL of the contact finder at HitHorizons.com.
ContactFinderError	string	<p>When Contact Finder service was requested and the service encountered an error, contains the error information.</p> <p>One of the following:</p> <ul style="list-style-type: none"> • null – when no error occurred • “not found” – when no contact URL was found • “Contact Finder limit reached: ...” – when a usage limit for Contact Finder was reached. <p>When Contact Finder service was not requested or a contact page could not be found, the value in this field is null.</p>

ContactFinderCompanyURL	string	When Contact Finder service was requested and the service could find contact information for the requested company, contains URL of the found page online. When Contact Finder service was not requested or a contact page could not be found, the value in this field is null.
ContactFinderScreenshotURL	string	When Contact Finder service was requested and the service could find contact information for the requested company, contains an URL where a screenshot of the found page can be retrieved. When Contact Finder service was not requested or a contact page could not be found, the value in this field is null.

HitHorizons Sales Analysis		
SalesAnalysisSectorId	string	A unique sales segment identifier assigned by HitHorizons. Values in this identifier define segment filtering criteria, e.g., ID "country-industry BELGIUM-G" indicates that only companies operating in Belgium and industry G are included in the industry analysis.
SalesAnalysisStateProvince	string	The company state/province, when including the state/province in the segment definition. Empty string otherwise.
SalesAnalysisCountry	string	The company country, when including the country in the segment definition. Empty string otherwise.
SalesAnalysisRegion	string	The company region, when including the region in the segment definition. Empty string otherwise.
SalesAnalysisSICCode	string	The company SIC Code, when including the SIC Code in the segment definition. Empty string otherwise.
SalesAnalysisIndustry	string	The company industry, when including the industry in the segment definition. Empty string otherwise.
SalesAnalysisCompanyCount	integer	Number of companies in the industry.
SalesAnalysisCurrency	string	Currency used in analyses – euro.
SalesAnalysisMedian	double	Median value of sales in the industry analysis.

SalesAnalysisMin	double	Minimum value of sales in the industry analysis.
SalesAnalysisMax	double	Maximum value of sales in the industry analysis.
SalesAnalysisMarketSize	double	Sum of sales in industry analysis representing the market size.
HitHorizonsSalesSizeRanking	integer	Single number indicating which decile the company belongs to in the industry. 1 is the lowest decile, 10 is the highest decile.
CompleteSectorSalesAnalysis URL	string	URL to the complete industry analysis at HitHorizons.com.

HitHorizons Employees Analysis

EmployeesAnalysisSectorId	string	A unique employees industry identifier assigned by HitHorizons. Values in this identifier define industry filtering criteria, e.g., "country-industry BELGIUM-G" indicates that only companies operating in Belgium and industry G are included in the industry analysis.
EmployeesAnalysisStateProvince	string	The company state/province, when including the state/province in the industry definition. Empty string otherwise.
EmployeesAnalysisCountry	string	The company country, when including the country in the industry definition. Empty string otherwise.
EmployeesAnalysisRegion	string	The company region, when including the region in the industry definition. Empty string otherwise.
EmployeesAnalysisSICCode	string	The company SIC Code, when including the SIC Code in the industry definition. Empty string otherwise.
EmployeesAnalysisIndustry	string	The company industry, when including the industry in the industry definition. Empty string otherwise.
EmployeesAnalysisCompany Count	integer	Number of companies in the industry.
EmployeesAnalysisMedian	double	Median number of employees in the industry analysis.

EmployeesAnalysisMin	double	Minimum number of employees in the industry analysis.
EmployeesAnalysisMax	double	Maximum number of employees in the industry analysis.
EmployeesAnalysisSum	double	Sum of the number of employees in the industry analysis representing the market size
HitHorizonsEmployeesSizeRanking	integer	Single number indicating which decile the company belongs to in the industry. 1 is the lowest decile, 10 is the highest decile.
CompleteSectorEmployeesAnalysisURL	string	URL to the complete industry analysis at HitHorizons.com.

6.1.3. Example request

In this example, we make a query to retrieve information on a single company identified by HitHorizons ID H-SK0001511351 through `/Company/Detail` endpoint. API Subscription key must be submitted:

```
GET https://api.hithorizons.com/Company/Detail?HitHorizonsId=H-SK0001511351 HTTP/1.1
Host: api.hithorizons.com
Ocp-Apiim-Subscription-Key: .....
```

6.1.4. Example response

The structure of the response is shown below. To interpret the object values, refer to the [HitHorizons API Code lists](#).

```
Content-Type: application/json; charset=utf-8
{
  "Success": true,
  "Error": null,
  "Result": {
    "HitHorizonsId": "H-SK0001511351",
    "DUNSNumber": "361339110",
    "CompanyName": "FinStat, s. r. o.",
    "CompanySecondaryName": "",
    "AddressStreetLine1": "Plynárenská 7/B",
    "AddressStreetLine2": "",
    "PostalCode": "821 09",
    "City": "Bratislava - mestská časť Ružinov",
```



```

"StateProvince": "",
"Country": "SLOVAKIA",
"CountryCode": "SK",
"NationalId": "47165367",
"NationalIdType": "00740",
"TaxId": null,
"VatId": null,
"VatValidationResult": null,
"VatValidationDate": null,
"SICText": "Telephone communications",
"SICCode": "4813",
"Industry": "E",
"LocalActivityCode": "631200",
"LocalActivityCodeType": "461",
"LocalActivityText": "Web portals",
"EstablishmentOfOwnership": 2013,
"SalesLocal": 2193640,
"LocalCurrency": "5080",
"SalesAccuracyIndicator": "0",
"SalesUSD": 2278290,
"SalesEUR": 2193640,
"HitHorizonsSalesAnalysis": {
  "ALL": {
    "SalesAnalysisSectorId": "ALL",
    "SalesAnalysisStateProvince": null,
    "SalesAnalysisCountry": null,
    "SalesAnalysisRegion": null,
    "SalesAnalysisSICCode": null,
    "SalesAnalysisIndustry": null,
    "SalesAnalysisCompanyCount": 78343295,
    "SalesAnalysisCurrency": "EUR",
    "SalesAnalysisMedian": 74538,
    "SalesAnalysisMin": 0,
    "SalesAnalysisMax": 352336116129,
    "SalesAnalysisMarketSize": 83509125534057,
    "HitHorizonsSalesSizeRanking": 10,
    "CompleteSectorSalesAnalysisURL":
"https://www.hithorizons.com/eu/companies/H-SK0001511351/finstat-s-r-
o/salesAnalyses#detail-analysis-all"
  },
  ...
},
"EmployeesNumber": 23,
"EmployeesNumberAccuracyIndicator": "3",
"EmployeesNumberLocal": 23,
"EmployeesNumberLocalAccuracyIndicator": "3",
"EmployeesNumberTotal": 23,
"EmployeesNumberTotalAccuracyIndicator": "3",
"HitHorizonsEmployeesAnalysis": {
  "ALL": {

```

```

        "EmployeesAnalysisSectorId": "ALL",
        "EmployeesAnalysisStateProvince": null,
        "EmployeesAnalysisCountry": null,
        "EmployeesAnalysisRegion": null,
        "EmployeesAnalysisSICCode": null,
        "EmployeesAnalysisIndustry": null,
        "EmployeesAnalysisCompanyCount": 78343295,
        "EmployeesAnalysisMedian": 1,
        "EmployeesAnalysisMin": 0,
        "EmployeesAnalysisMax": 697358,
        "EmployeesAnalysisSum": 447271023,
        "HitHorizonsEmployeesSizeRanking": 10,
        "CompleteSectorEmployeesAnalysisURL":
"https://www.hithorizons.com/eu/companies/H-SK0001511351/finstat-s-r-
o/employeesAnalyses#detail-analysis-all"
    },
    ...
},
"CompanyType": 3,
"LocationType": 0,
"Websites": [
    "finstat.sk"
],
"Emails": [],
"EmailDomains": [
    "@finstat.sk"
],
"Phones": [],
"Website": "finstat.sk",
"EmailDomain": "@finstat.sk",
"LinkedInURLs": [
    "https://www.linkedin.com/company/finstat"
],
"FacebookURLs": [],
"InstagramURLs": [],
"TikTokURLs": [],
"XURLs": [],
"YouTubeURLs": [],
"GitHubURLs": [],
"ProductKeywords": null,
"HitHorizonsCompanyProfileURL": "https://www.hithorizons.com/eu/companies/H-
SK0001511351/finstat-s-r-o",
"HitHorizonsContactFinderURL": "https://www.hithorizons.com/eu/companies/H-
SK0001511351/finstat-s-r-o/contacts?version=html",
"ContactFinderError": null,
"ContactFinderCompanyURL": null,
"ContactFinderScreenshotURL": null
}
}

```

6.1.5. VAT validation

It is possible to request the validation of the VatId value in an external service to ensure that the VAT number on file is current, valid, and usable for invoicing purposes.

To request VAT validation, set the ValidateVat parameter value to true.

The validation occurs during the request handling, which means that the request will take longer than a request without validation.

There are daily and monthly limits for this functionality. These limits are separate from the general API limits (see section 5).

Limit	Package		
	PRO	GROW	STARTER
Daily requests	1 000	200	50
Monthly requests	20 000	4 000	1 000
Daily invalid requests	100	50	25
Daily error requests	20	20	10

Invalid requests are counted when the VAT validation result is that the VAT number is currently not valid. HitHorizons Invoicing database contains VAT identifiers from official sources (exact data source depends on particular country). Invalid VAT identifiers should occur only when the VAT identifier has been invalidated since the last data update.

Error requests are counted when the external service returns an error during validation. This can be caused by external service unavailability or an error in the external service. Such errors should be transient. After receiving an error, it's recommended to retry later. The limits for error requests are intentionally set to low values to prevent overloading the external services while there are increased occurrences of errors. If validation errors persist, please contact support. Errors that occurred within the HitHorizons systems do not cause the request to be counted against the daily error limit.

One VAT identifier will be validated only once per calendar day. Subsequent requests for the same value will receive the result of the last validation, and the usage won't be counted against the daily/monthly limits.

This means that when one company detail is retrieved multiple times during one day, only one validation will occur, and only the first call will be counted against the limits.

The information about VAT validation limits and usage is returned in the HTTP response headers as follows:

```
X-HHAPI-Vat-Limit-Monthly: 20000
X-HHAPI-Vat-Limit-Daily: 1000
X-HHAPI-Vat-Limit-Daily-Invalid: 100
```

```
X-HHAPI-Vat-Limit-Daily-Errors: 20
X-HHAPI-Vat-Usage-Monthly: 80
X-HHAPI-Vat-Usage-Daily: 18
X-HHAPI-Vat-Usage-Daily-Invalid: 1
X-HHAPI-Vat-Usage-Daily-Errors: 3
```

The daily limits are reset at midnight UTC. The monthly limits are reset at the beginning of a calendar month.

6.1.6. Contact Finder

It is possible to request to find contact information for the requested company online. When requested, an online search is performed, attempting to match the contact information on file with an online website.

To request Contact Finder service, set the ContactFinder parameter value to true.

The search occurs during the request handling, which means that the request will take longer than a request without searching.

There are monthly limits for this functionality. These limits are separate from the general API limits (see section 5). The limits depend on your package.

Limit	Package		
	PRO	GROW	STARTER
Monthly requests	1 000	500	0

The information about Contact Finder limits and usage is returned in the HTTP response headers as follows:

```
X-HHAPI-Contact-Finder-Limit-Monthly-Subscription: 500
X-HHAPI-Contact-Finder-Limit-Monthly: 500
X-HHAPI-Contact-Finder-Usage-Monthly-Subscription: 12
X-HHAPI-Contact-Finder-Usage-Monthly: 12
```

The usage/limits is counted:

- at the entire account level:
 - header X-HHAPI-Contact-Finder-*-Monthly
 - counted for all licenses (including web access), and API subscriptions.
- at the API subscription level:
 - header X-HHAPI-Contact-Finder-*-Monthly-Subscription

The monthly limits are reset at the beginning of a calendar month.

6.2. ENDPOINT /Company/DetailBasic

Starter
Grow
Pro

This endpoint provides the data of a single company identified by HitHorizons ID. The response contains complete data about a single company, without industry information.

This endpoint is also available under alternative path /Company/GetBasic.

6.2.1. Request parameters

The following parameter is required to make a query. You can obtain the HitHorizons ID from /Company/Search endpoint, /Company/SearchUnstructured endpoint or /Company/Suggestions endpoint.

HitHorizonsId	string	A unique company identification number assigned by HitHorizons.
ValidateVat	bool	When true, the VAT identifier will get validated during the request. See section 6.1.5 above for details.
ContactFinder	bool	When true, Contact Finder service will attempt to retrieve contact information for the company online. See section 6.1.6 above for details.
ProductKeywords	bool	When true, Product keywords will be included in the response, if available for the requested company.

6.2.2. Response properties

The following table below shows the complete list of retrieved properties related to a single company in the response and their descriptions. To interpret the values of the properties, refer to the documents below:

- [HitHorizons API Code lists](#) - including activity code types, currency codes, legal structure code list, national ID type code list, industry classification code list, SIC activity code list.

CompanyBasicDetailResult		
HitHorizonsId	string	A unique company identification number assigned by HitHorizons.

DUNSNumber	string	9-digit non-indicative identification number assigned by D&B company.
CompanyName	string	Official name of the company
CompanySecondaryName	string	Secondary name, trade name or brand of the company, if used
AddressStreetLine1	string	Physical location of the company as referred to by a local authority (e.g., Business register), generally stated in the local language.
AddressStreetLine2	string	Physical location of the company as referred to by a local authority (e.g., Business register), generally stated in the local language.
PostalCode	string	Postal or zip code for the physical location.
City	string	Name of the city where the company is located. Generally, in the local language.
StateProvince	string	Name of the state/province, or county where the company is located. Generally, in the local language.
Country	string	English name of the country where the business is located.
CountryCode	string	ISO 3166-1 alpha-2 code of the country where the business is located.
NationalId	string	Company identification number officially assigned and used in some countries for company incorporation and tax collection.
NationalIdType	string	Code that identifies the type of national ID number system used, for example '00012' = CRO, '00014' = Siren. A table describing each code value is available here.
TaxId	string	Company identifier for taxation purposes.
VatId	string	Company identifier for VAT purposes.

VatValidationResult	string	<p>When VAT validation was requested, the result of the validation. One of the following:</p> <ul style="list-style-type: none"> • valid – the VAT identifier in VatId was validated in an external service and it is currently valid • invalid – the VAT identifier in VatId was validated in an external service and it is currently invalid • error: [textual description of the error] – an error occurred during the validation <p>When VAT validation was not requested, the value in this field is null.</p>
VatValidationDate	date	<p>When VAT validation was requested and the validation completed successfully, contains the date when the validation was performed The API returns only the current date in this field.</p> <p>When VAT validation was not requested, the value in this field is null.</p>
SICText	string	<p>Narrative description in English of the operations or activities of the business also known as line of business. Relates to the four-digit primary SIC code which is the 1987 U.S. government code.</p>
SICCode	string	<p>Standard industrial classification code system categorizes business establishments according to the type of business activities. The SIC code of a parent/ultimate may include the activities of its subsidiaries. Some of the countries use different industrial classification (e.g., NACE). All inputs are converted to SIC Code as closely as possible.</p>
Industry	string	<p>Code of the SIC division, e.g., A - Agriculture, forestry and fishing. A table of code values is available here.</p>
LocalActivityCode	string	<p>This code represents the locally used activity code from the system indicated by the value in the field LocalActivityCodeType.</p>
LocalActivityCodeType	string	<p>System used for the local activity, for example NACE, UK SIC NAF, etc. A table of code values is available here.</p>
LocalActivityText	string	<p>English description of the local activity, when available. Relates to the LocalActivityCode.</p>

EstablishmentOfOwnership	integer	A four-digit number representing the year that current ownership took control, or the incorporation year if no control change took place.
SalesLocal	double	Annual sales for the business in local currency. See currency code to determine the currency used. Signed decimal field.
LocalCurrency	string	Code indicating the annual sales currency. A reference table is available here . For example, '0620' = Czech koruna
SalesAccuracyIndicator	string	A code value which describes the reliability of the annual sales figure. 0 - actual 1 - low end of the range 2 - estimated, or not available when sales value is zero 3 - modeled blank - not available when SalesLocal equals 0 or is unknown.
SalesUSD	double	Sales for the business in U.S. dollars. The currency exchange rate is updated once a year. Signed decimal field.
SalesEUR	double	Sales for the business in Euro. The currency exchange rate is updated once a year. Signed decimal field.
EmployeesNumber	integer	The number of employees in the company.
EmployeesNumberAccuracyIndicator	string	A code value which describes the reliability of the number of employees. 0 - actual 1 - low end of the range 2 - estimated, or not available when the number of employees is zero 3 - modeled blank - not available when EmployeesNumber equals 0 or is unknown.
EmployeesNumberLocal	integer	The number of employees at this location.
EmployeesNumberLocalAccuracyIndicator	string	A code value which describes the reliability of the number of employees at this location. 0 - actual 1 - low end of the range

		<p>2 - estimated, or not available when the number of employees is zero</p> <p>3 - modeled</p> <p>blank - not available when EmployeesNumberLocal equals 0 or is unknown.</p>
EmployeesNumberTotal	integer	The total number of employees in the business.
EmployeesNumberTotalAccuracyIndicator	string	<p>A code value which describes the reliability of the number of employees in the business.</p> <p>0 - actual</p> <p>1 - low end of the range</p> <p>2 - estimated, or not available when the number of employees is zero</p> <p>3 - modeled</p> <p>blank - not available when EmployeesNumberTotal equals 0 or is unknown.</p>
CompanyType	integer	Legal status of this company. Table is available here.
LocationType	integer	<p>This code indicates whether the business is:</p> <p>0 = Single Location - no other entities report to it</p> <p>1 = Headquarter/Parent - branches and/or subsidiaries report to it</p> <p>2 = Branch - secondary location to a headquarter</p> <p>Note: It is possible to have a single location subsidiary or a headquarter subsidiary. A headquarters can also be a parent with subsidiaries. The code is blank when not available.</p>
Websites	string array	Addresses of the websites associated with the company.
Emails	string array	Email contacts associated with the company.
EmailDomains	string array	Domains of the email contacts associated with the company. The leading at-sign (@) is included in the domain text.
Phones	string array	Phone contacts associated with the company.
Website	string	Address of the first website associated with the company.
EmailDomain	string	Domain of the first email contact associated with the company. The leading at-sign (@) is included in the domain text.

LinkedInURLs	string array	URLs of the company profile at LinkedIn
FacebookURLs	string array	URLs of the company profile at Facebook
InstagramURLs	string array	URLs of the company profile at Instagram.
TikTokURLs	string array	URLs of the company profile at TikTok.
XURLs	string array	URLs of the company profile at X.
YouTubeURLs	string array	URLs of the company channel at YouTube.
GitHubURLs	string array	URLs of the company profile at GitHub.
ProductKeywords	string array	When ProductKeywords request parameter was set to true, contains a list of Product Keywords associated with the company, if available.
HitHorizonsCompanyProfileURL	string	URL of the company profile at HitHorizons.com.
HitHorizonsContactFinderURL	string	URL of the contact finder at HitHorizons.com.
ContactFinderError	String	<p>When Contact Finder service was requested and the service encountered an error, contains the error information.</p> <p>One of the following:</p> <ul style="list-style-type: none"> • null – when no error occurred • “not found” – when no contact URL was found • “Contact Finder limit reached: ...” – when a usage limit for Contact Finder was reached. <p>When Contact Finder service was not requested or a contact page could not be found, the value in this field is null.</p>
ContactFinderCompanyURL	string	<p>When Contact Finder service was requested and the service could find contact information for the requested company, contains URL of the found page online.</p> <p>When Contact Finder service was not requested or a contact page could not be found, the value in this field is null.</p>
ContactFinderScreenshotURL	string	When Contact Finder service was requested and the service could find contact information for the requested company, contains an URL where a screenshot of the found page can be retrieved.

		When Contact Finder service was not requested or a contact page could not be found, the value in this field is null.
--	--	--

6.2.3. Example request

In this example, we make a query to retrieve information on a single company identified by HitHorizons ID H-SK0001511351 through `/Company/DetailBasic` endpoint. API Subscription key must be submitted:

```
GET https://api.hithorizons.com/Company/DetailBasic?HitHorizonsId=H-SK0001511351
HTTP/1.1
Host: api.hithorizons.com
Ocp-Api-Subscription-Key: .....
```

6.2.4. Example response

The structure of the response to our query is below. To interpret the object values, refer to the [HitHorizons API Code lists](#).

```
Content-Type: application/json; charset=utf-8
{
  "Success": true,
  "Error": null,
  "Result": {
    "HitHorizonsId": "H-SK0001511351",
    "DUNSNumber": "361339110",
    "CompanyName": "FinStat, s. r. o.",
    "CompanySecondaryName": "",
    "AddressStreetLine1": "Plynárenská 7/B",
    "AddressStreetLine2": "",
    "PostalCode": "821 09",
    "City": "Bratislava - mestská časť Ružinov",
    "StateProvince": "",
    "Country": "SLOVAKIA",
    "CountryCode": "SK",
    "NationalId": "47165367",
    "NationalIdType": "00740",
    "TaxId": null,
    "VatId": null,
    "VatValidationResult": null,
    "VatValidationDate": null,
    "SICText": "Telephone communications",
    "SICCode": "4813",
    "Industry": "E",
```

```

"LocalActivityCode": "631200",
"LocalActivityCodeType": "461",
"LocalActivityText": "Web portals",
"EstablishmentOfOwnership": 2013,
"SalesLocal": 2193640,
"LocalCurrency": "5080",
"SalesAccuracyIndicator": "0",
"SalesUSD": 2278290,
"SalesEUR": 2193640,
"EmployeesNumber": 23,
"EmployeesNumberAccuracyIndicator": "3",
"EmployeesNumberLocal": 23,
"EmployeesNumberLocalAccuracyIndicator": "3",
"EmployeesNumberTotal": 23,
"EmployeesNumberTotalAccuracyIndicator": "3",
"CompanyType": 3,
"LocationType": 0,
"Websites": [
  "finstat.sk"
],
"Emails": [],
"EmailDomains": [
  "@finstat.sk"
],
"Phones": [],
"Website": "finstat.sk",
"EmailDomain": "@finstat.sk",
"LinkedInURLs": [
  "https://www.linkedin.com/company/finstat"
],
"FacebookURLs": [],
"InstagramURLs": [],
"TiktokURLs": [],
"XURLs": [],
"YouTubeURLs": [],
"GithubURLs": [],
"ProductKeywords": null,
"HitHorizonsCompanyProfileURL": "https://www.hithorizons.com/eu/companies/H-SK0001511351/finstat-s-r-o",
"HitHorizonsContactFinderURL": "https://www.hithorizons.com/eu/companies/H-SK0001511351/finstat-s-r-o/contacts?version=html",
"ContactFinderError": null,
"ContactFinderCompanyURL": null,
"ContactFinderScreenshotURL": null
}
}

```

6.3. ENDPOINT /Company/DetailBasicMulti

This endpoint provides the data of multiple companies identified by HitHorizons ID. The response contains complete data about the requested companies, without industry information.

This POST endpoint accepts parameters in two formats:

- Form data (Content-Type: application/x-www-form-urlencoded).
- JSON (Content-Type: application/json).

6.3.1. Request parameters

The following parameter is required to make a query. You can obtain the HitHorizons ID from /Company/Search endpoint, /Company/SearchUnstructured endpoint, /Company/SearchLite endpoint, or /Company/Suggestions endpoint.

HitHorizonsIds	string array	An array of unique company identification numbers assigned by HitHorizons.
-----------------------	--------------	--

6.3.2. Response properties

The response contains a dictionary of CompanyBasicDetailResult records, keyed by HitHorizonsIds. See section 6.2.2 for details about the structure of CompanyBasicDetailResults. Values for HitHorizonsId values which were not found, are null.

CompanyBasicDetailMultiResponse		
Results	Dictionary<string, CompanyBasicDetailResult>	Company records for the requested companies. Not found records will have null value.

6.3.3. Example request

```
POST https://api.hithorizons.com/Company/DetailBasicMulti HTTP/1.1
Host: api.hithorizons.com
Ocp-Api-Subscription-Key: .....
Content-Type: application/x-www-form-urlencoded
```

```
HitHorizonsIds=H-SK0001511351&HitHorizonsIds=H-DE0022268804
```

6.3.4. Example response

```
Content-Type: application/json; charset=utf-8
```

```
{
  "Success": true,
  "Error": null,
  "Result": {
    "Results": {
      "H-DE0022268804": {
        "HitHorizonsId": "H-DE0022268804",
        "DUNSNumber": "315016295",
        "CompanyName": "VOLKSWAGEN AG",
        ...
      },
      "H-SK0001511351": {
        "HitHorizonsId": "H-SK0001511351",
        "DUNSNumber": "361339110",
        "CompanyName": "FinStat, s. r. o.",
        ...
      }
    }
  }
}
```

6.4. ENDPOINT /Company/Search

Starter

Grow

Pro

This endpoint allows you to search the company database using a **structured** query.

Important Note for HitHorizons API Company Search: Default search includes partnerships, corporations, proprietorships, and cooperatives. For other company types or branches, manual selection is required. Ensure to adjust these settings according to your specific search requirements.

6.4.1. Request parameters

The following table shows the request parameters that can be used in the query. [Here is the List of countries](#) that can be used in the "Country" field.

DUNSNumber (optional)	string	9-digit non-indicative identification number assigned by D&B company.
CompanyName (optional)	string	Official name of the company
NationalId (optional)	string	Company identification number officially assigned and used in some countries for company incorporation and tax collection.
TaxId (optional)	string	Company identifier for taxation purposes.
VatId (optional)	string	VAT number or VAT number identifier. Searching is performed even on potentially invalid VAT numbers. To ensure that the company VAT number is valid, VAT validation needs to be done in one of the Detail endpoints.
AddressUnstructured (optional)	string	Query to search for in the company address.
AddressStreet (optional)	string	Query to search for in the company street address.
PostalCode (optional)	string	Query to search for in the company postal code.
City (optional)	string	Query to search for in the company city.
StateProvince (optional)	string	Query to search for in the company state/province or county.

Country (optional)	string array	English name of the country where the business is located. This field accepts 2-letter ISO country codes. Multiple values are supported.
Website (optional)	string	Query to search for in company websites.
Email	string	Query to search for in company email contacts.
EmailDomain (optional)	string	Query to search for in company email domains.
Phone	string	Query to search for in company phone contacts.
LinkedInUrl (optional)	string	Query to search for in company LinkedIn URLs.
FacebookURL (optional)	string	Query to search for in company Facebook URLs.
InstagramUrl (optional)	string	Query to search for in company Instagram URLs.
TikTokUrl (optional)	string	Query to search for in company TikTok URLs.
XUrl (optional)	string	Query to search for in company X URLs.
YouTubeUrl (optional)	string	Query to search for in company YouTube URLs.
GitHubUrl (optional)	string	Query to search for in company GitHub URLs.
ShowBranches (optional)	boolean	When false, only companies indicated as single-location or headquarters are returned (LocationType = 0 or 1). Also, companies with type Branch (CompanyType = 143) are excluded. When true, all companies are returned. When not specified, false is use by default.
CompanyTypes (optional)	integer array	Array of company types to return. When not supplied, only the following company types are returned: 0, 3, 10, 11, 12, 13, 14, 100, 102, 107, 151, 154, 160, 167 Refer to the HitHorizons API Code lists (companyType) for the values applicable for this field. This value can be provided as a comma-separated list of values, instead of an array of values (i.e. CompanyTypes=3,13 , instead of CompanyTypes=3&CompanyTypes=13).
MaxResults (optional)	integer	Maximum of 100 results is supported. 20 when not supplied.

6.4.2. Response properties

The following tables show the list of retrieved properties in the response and their descriptions. To interpret values of properties, refer to the [HitHorizons API Code lists](#) for Industry and SICCode fields.

CompanySearchResponse		
Results	CompanySearchResult array	
ResultsCount	integer	Number of companies returned in the response (field results).
TotalCount	integer	Number of all companies matching the query.

CompanySearchResult		
HitHorizonsId	string	A unique company identification number assigned by HitHorizons.
DUNSNumber	string	9-digit non-indicative identification number assigned by D&B company.
CompanyName	string	Official name of the company
CompanySecondaryName	string	Secondary name, trade name or brand of the company, if used.
AddressStreetLine1	string	Physical location of the company as referred to by a local authority (e.g., Business register), generally stated in the local language.
AddressStreetLine2	string	Physical location of the company as referred to by a local authority (e.g., Business register), generally stated in the local language.
PostalCode	string	Postal or zip code for the physical location.
City	string	Name of the city where the company is located. Generally, in the local language.
StateProvince	string	Name of the state/province, or county where the company is located. Generally, in the local language.
Country	string	English name of the country where the business is located.

CountryCode	string	ISO 3166-1 alpha-2 code of the country where the business is located.
NationalId	string	Company identification number officially assigned and used in some countries for company incorporation and tax collection.
TaxId	string	Company identifier for taxation purposes.
SICCode	string	Standard industrial classification code system categorizes business establishments according to the type of business activities. The SIC code of a parent/ultimate may include the activities of its subsidiaries. Some of the countries use different industrial classification (e.g., NACE). All inputs are converted to SIC Code as closely as possible.
Industry	string	Code of the SIC division, e.g., A - Agriculture, forestry and fishing. A table of code values is available here.
LocalActivityCode	string	This code represents the locally used activity code from the system indicated by the value in the field LocalActivityCodeType.
LocalActivityCodeType	string	System used for the local activity, for example NACE, UK SIC NAF, etc. A table of code values is available here.
EstablishmentOfOwnership	string	A four-digit number representing the year that current ownership took control, or the incorporation year if no control change took place. Not available on branch records.
SalesEUR	double	Sales for the business in EUR. The currency exchange rate is updated once a year. Signed decimal field.
EmployeesNumber	integer	The number of employees in the company.
CompanyType	integer	Legal status of this company. Table is available here.
LocationType	integer	This code indicates whether the business is: 0 = Single Location - no other entities report to it 1 = Headquarter/Parent - branches and/or subsidiaries report to it 2 = Branch - secondary location to a headquarter Note: It is possible to have a single location subsidiary or a headquarter subsidiary. A headquarters can also be a parent with subsidiaries. The code is blank when not available.
Websites	string array	Addresses of the websites associated with the company.

Emails	string array	Email contacts associated with the company.
EmailDomains	string array	Domains of the email contacts associated with the company. The leading at-sign (@) is included in the domain text.
Phones	string array	Phone contacts associated with the company.
LinkedInURLs	string array	URLs of the company profile at LinkedIn
FacebookURLs	string array	URLs of the company profile at Facebook
InstagramURLs	string array	URLs of the company profile at Instagram.
TikTokURLs	string array	URLs of the company profile at TikTok.
XURLs	string array	URLs of the company profile at X.
YouTubeURLs	string array	URLs of the company channel at YouTube.
GitHubURLs	string array	URLs of the company profile at GitHub.
CompanyProfileURL	string	URL to the company profile at HitHorizons.com

6.4.3. Example request

In this example, we make a query to search companies named Finstat through `/Company/Search` endpoint. The API subscription key must be submitted:

```
GET https://api.hithorizons.com/Company/Search?CompanyName=Finstat HTTP/1.1
Host: api.hithorizons.com
```

```
Ocp-Api-Subscription-Key: .....
```

6.4.4. Example response

The structure of the response to our query is below. To interpret the object values, refer to the [HitHorizons API Code lists](#) (Industry, SICCode).

```
Content-Type: application/json; charset=utf-8
{
  "Success": true,
  "Error": null,
  "Result": {
    "Results": [
      {
        "HitHorizonsId": "H-SK0001511351",
        "DUNSNumber": "361339110",
        "CompanyName": "FinStat, s. r. o.",
        "CompanySecondaryName": "",
        "AddressStreetLine1": "Plynárenská 7/B",
        "AddressStreetLine2": "",
        "PostalCode": "821 09",
        "City": "Bratislava - mestská časť Ružinov",
        "StateProvince": "",
        "Country": "SLOVAKIA",
        "CountryCode": "SK",
        "NationalId": "47165367",
        "TaxId": null,
        "SICCode": "4813",
        "Industry": "E",
        "LocalActivityCode": "631200",
        "LocalActivityCodeType": "461",
        "EstablishmentOfOwnership": 2013,
        "SalesEUR": 2193640,
        "EmployeesNumber": 23,
        "CompanyType": 3,
        "LocationType": 0,
        "Websites": [
          "finstat.sk"
        ],
        "Emails": null,
        "EmailDomains": [
          "@finstat.sk"
        ],
        "Phones": null,
        "LinkedInURLs": [
```

```
        "https://www.linkedin.com/company/finstat"  
    ],  
    "FacebookURLs": null,  
    "InstagramURLs": null,  
    "TiktokURLs": null,  
    "XURLs": null,  
    "YouTubeURLs": null,  
    "GithubURLs": null,  
    "CompanyProfileURL": "https://www.hithorizons.com/eu/companies/H-  
SK0001511351/finstat-s-r-o"  
    }  
,  
...  
    ],  
    "ResultsCount": 18,  
    "TotalCount": 18  
    }  
}
```

6.5. ENDPOINT /Company/SearchUnstructured

Starter

Grow

Pro

This endpoint allows you to search the company database by using an **unstructured** query. It is suitable when you have incomplete data on companies in your system and you need to complete it.

Important Note for HitHorizons API Company Search: Default search includes partnerships, corporations, proprietorships, and cooperatives. For other company types or branches, manual selection is required. Ensure to adjust these settings according to your specific search requirements.

6.5.1. Request parameters

The following table shows the request parameters that can be used in the query. [Here is the List of countries](#) that can be used in the "Address" field.

Ids (optional)	string array	All types of company IDs can be used – HitHorizons number, DUNS number, national ID, taxation ID or VAT ID.
Name (optional)	string	Name of the company
Address (optional)	string	Query to search in company address. This field can contain an English country name at the end – in such case, the search is limited to the given country.
Country (optional)	string array	English name of the country where the business is located. This field accepts 2-letter ISO country codes. Multiple values are supported.
ShowBranches (optional)	boolean	When false, only companies indicated as single-location or headquarters are returned (LocationType = 0 or 1). Also, companies with type Branch (CompanyType = 143) are excluded. When true, all companies are returned. When not specified, false is use by default.
CompanyTypes (optional)	integer array	Array of company types to return. When not supplied, only the following company types are returned: 0, 3, 10, 11, 12, 13, 14, 100, 102, 107, 151, 154, 160, 167 Refer to the HitHorizons API Code lists (companyType) for the values applicable for this field.

		This value can be provided as a comma-separated list of values, instead of an array of values (i.e. CompanyTypes=3,13 , instead of CompanyTypes=3&CompanyTypes=13).
MaxResults (optional)	integer	Maximum of 100 results is supported. 20 when not supplied.

6.5.2. Response properties

The list and description of response properties is the same as in the case of endpoint `/Company/Search`.

6.5.3. Example request

```
GET https://api.hithorizons.com/Company/SearchUnstructured?Name=Finstat HTTP/1.1
Host: api.hithorizons.com
Ocp-Apim-Subscription-Key: .....
```

6.5.4. Example response

The response is the same as in the case of the endpoint `/Company/Search`, example below:

```
Content-Type: application/json; charset=utf-8
{
  "Success": true,
  "Error": null,
  "Result": {
    "Results": [
      {
        "HitHorizonsId": "H-SK0001511351",
        "DUNSNumber": "361339110",
        "CompanyName": "FinStat, s. r. o.",
        "CompanySecondaryName": "",
        "AddressStreetLine1": "Plynárenská 7/B",
        "AddressStreetLine2": "",
        "PostalCode": "821 09",
        "City": "Bratislava - mestská časť Ružinov",
        "StateProvince": "",
        "Country": "SLOVAKIA",
        "CountryCode": "SK",
        "NationalId": "47165367",
        "TaxId": null,

```

```
    "SICCode": "4813",
    "Industry": "E",
    "LocalActivityCode": "631200",
    "LocalActivityCodeType": "461",
    "EstablishmentOfOwnership": 2013,
    "SalesEUR": 2193640,
    "EmployeesNumber": 23,
    "CompanyType": 3,
    "LocationType": 0,
    "Websites": [
      "finstat.sk"
    ],
    "Emails": null,
    "EmailDomains": [
      "@finstat.sk"
    ],
    "Phones": null,
    "LinkedInURLs": [
      "https://www.linkedin.com/company/finstat"
    ],
    "FacebookURLs": null,
    "InstagramURLs": null,
    "TiktokURLs": null,
    "XURLs": null,
    "YouTubeURLs": null,
    "GithubURLs": null,
    "CompanyProfileURL": "https://www.hithorizons.com/eu/companies/H-
SK0001511351/finstat-s-r-o"
  },
  ...
],
"ResultsCount": 18,
"TotalCount": 18
}
}
```


6.6. ENDPOINT /Company/SearchLite

This endpoint allows you to search the company database by using a **structured** query. The endpoint provides a limited set of data fields.

Important Note for HitHorizons API Company Search: Default search includes partnerships, corporations, proprietorships, and cooperatives. For other company types or branches, manual selection is required. Ensure to adjust these settings according to your specific search requirements.

6.6.1. Request parameters

This endpoint accepts parameters identical to those in the /Company/Search endpoint.

6.6.2. Response properties

CompanySearchLiteResponse		
Results	CompanySearchLiteResult array	
ResultsCount	integer	Number of companies returned in the response (field results).
TotalCount	integer	Number of all companies matching the query.

CompanySearchLiteResult		
HitHorizonsId	string	A unique company identification number assigned by HitHorizons.
CompanyName	string	Official name of the company
CompanySecondaryName	string	Secondary name, trade name or brand of the company, if used.

AddressStreetLine1	string	Physical location of the company as referred to by a local authority (e.g., Business register), generally stated in the local language.
AddressStreetLine2	string	Physical location of the company as referred to by a local authority (e.g., Business register), generally stated in the local language.
PostalCode	string	Postal or zip code for the physical location.
City	string	Name of the city where the company is located. Generally, in the local language.
StateProvince	string	Name of the state/province, or county where the company is located. Generally, in the local language.
Country	string	English name of the country where the business is located.
CountryCode	string	ISO 3166-1 alpha-2 code of the country where the business is located.

6.6.3. Example request

```
GET https://api.hithorizons.com/Company/SearchLite?CompanyName=Finstat HTTP/1.1
Host: api.hithorizons.com
Ocp-Apim-Subscription-Key: .....
```

6.6.4. Example response

```
Content-Type: application/json; charset=utf-8
{
  "Success": true,
  "Error": null,
  "Result": {
    "Results": [
      {
        "HitHorizonsId": "H-SK0001511351",
        "CompanyName": "FinStat, s. r. o.",
        "CompanySecondaryName": "",
        "AddressStreetLine1": "Plynárenská 7/B",
        "AddressStreetLine2": "",
        "PostalCode": "821 09",
        "City": "Bratislava - mestská časť Ružinov",
        "StateProvince": "",
        "Country": "SLOVAKIA",
```

```
        "CountryCode": "SK"  
    },  
    ...  
]  
}  
}
```

6.7. ENDPOINT /Company/SearchLiteUnstructured

This endpoint allows you to search the company database by using an **unstructured** query. The endpoint provides a limited set of data fields.

Important Note for HitHorizons API Company Search: Default search includes partnerships, corporations, proprietorships, and cooperatives. For other company types or branches, manual selection is required. Ensure to adjust these settings according to your specific search requirements.

6.7.1. Request parameters

This endpoint accepts parameters identical to those in the /Company/SearchUnstructured endpoint.

6.7.2. Response properties

The list and description of response properties is the same as in the case of endpoint /Company/SearchLite.

6.7.3. Example request

```
GET https://api.hithorizons.com/Company/SearchLiteUnstructured?Name=Finstat HTTP/1.1
Host: api.hithorizons.com
Ocp-Apim-Subscription-Key: .....
```

6.7.4. Example response

```
Content-Type: application/json; charset=utf-8
{
  "Success": true,
  "Error": null,
  "Result": {
    "Results": [
      {
        "HitHorizonsId": "H-SK0001511351",
```

```
"CompanyName": "FinStat, s. r. o.",  
"CompanySecondaryName": "",  
"AddressStreetLine1": "Plynárenská 7/B",  
"AddressStreetLine2": "",  
"PostalCode": "821 09",  
"City": "Bratislava - mestská časť Ružinov",  
"StateProvince": "",  
"Country": "SLOVAKIA",  
"CountryCode": "SK"  
},  
...  
]  
}  
}
```

6.8. ENDPOINT /Company/Suggestions

Starter

Grow

Pro

This endpoint allows you to search for companies using a company name. If fewer companies than specified are found, results of company name suggestions are returned. This is useful for populating dropdown selectors for autocomplete scenarios.

6.8.1. Request parameters

Query	string	Company name query. Minimum length is 3 characters.
Country	string array	English name of the country where the search will be limited. This field accepts 2-letter ISO country codes. Multiple values are supported.
SkipSuggestions	boolean	When true, only existing companies will be returned in the response. No suggestions will be added to fill the response when fewer than MaxResults companies are found. This is useful to make the endpoint respond faster in such cases. This is also useful when filtering in a single country because the suggestions always come from the complete, Europe-wide database and cannot be limited to a single country. Skipping suggestions will prevent showing suggestions not available in the filtered country.
MaxResults (optional)	integer	Maximum of 20 results is supported. 20 when not supplied.

6.8.2. Response properties

The response is an array of CompanySuggestion objects:

CompanySuggestion		
HitHorizonsId	string	A unique company identification number assigned by HitHorizons. This value is available for company results, null for suggestions.
CompanyName	string	Official name of the company or suggestion value.

PostalCode	string	Postal or zip code for the physical location. This value is available for company results, null for suggestions.
StateProvince	string	Name of the state/province, or county where the company is located. Generally, in the local language. This value is available for company results, null for suggestions.
NationalId	string	Company identification number officially assigned and used in some countries for company incorporation and tax collection. This value is available for company results, null for suggestions.
Country	string	Name of the country in English where the business is located. This value is available for company results, null for suggestions.
CountryCode	string	Country code of the country where the business is located. This value is available for company results, null for suggestions.

6.8.3. Example request

```
GET https://api.hithorizons.com/Company/Suggestions?Query=finstats&MaxResults=2
HTTP/1.1
Host: api.hithorizons.com
Ocp-Api-Subscription-Key: .....
```

6.8.4. Example response

```
Content-Type: application/json; charset=utf-8
{
  "Success": true,
  "Error": null,
  "Result": [
    {
      "HitHorizonsId": "H-SK0001511351",
      "CompanyName": "FinStat, s. r. o.",

```

```
    "PostalCode": "821 09",  
    "StateProvince": "",  
    "NationalId": "47165367",  
    "Country": "SLOVAKIA",  
    "CountryCode": "sk"  
  },  
  {  
    "HitHorizonsId": null,  
    "CompanyName": "finstatus",  
    "PostalCode": null,  
    "StateProvince": null,  
    "NationalId": null,  
    "Country": null,  
    "CountryCode": null  
  }  
]  
}
```


6.9. ENDPOINT /Company/CodeLists

Starter

Grow

Pro

This endpoint allows you to retrieve code lists for values used in the API.

6.9.1. Request parameters

There are no request parameters for this endpoint.

6.9.2. Response properties

The response is a Dictionary where keys represent the corresponding code list type, and the value is an array of CodeListValue objects.

CodeListValue		
Code	string	Item code.
Value	string	Item value.
Parameters	Dictionary<string, string>	Additional parameters for the item, depending on the code list: <ul style="list-style-type: none"> • Country <ul style="list-style-type: none"> ○ Region – region where the country is assigned • LocalActivityCodeType <ul style="list-style-type: none"> ○ CodelistAvailable – when true, the code list for this type can be retrieved using the endpoint <code>/Company/CodeLists/LocalActivityCodes</code> • Currency <ul style="list-style-type: none"> ○ ISOCODE – ISO code of the currency • NationalIdType <ul style="list-style-type: none"> ○ Description – textual description of the identifier type in the given country • SICCode:

		<ul style="list-style-type: none"> Industry – Letter of the industry the code is classified in. Refers to the code list Industry.

6.9.3. Example request

```
GET https://api.hithorizons.com/Company/CodeLists HTTP/1.1
Host: api.hithorizons.com
Ocp-Api-Subscription-Key: .....
```

6.9.4. Example response

```
Content-Type: application/json; charset=utf-8
{
  "Success": true,
  "Error": null,
  "Result": {
    "Country": [
      {
        "Code": "AD",
        "Value": "Andorra",
        "Parameters": {
          "Region": "off"
        }
      },
      ...
    ]
  }
}
```

6.10.ENDPOINT /Company/CodeLists/LocalActivityCodes

Starter
Grow
Pro

This endpoint allows you to retrieve code lists for local activity codes for individual type codes.

6.10.1. Request parameters

LocalActivityCodeType	string	Type code of the local activity code system.
------------------------------	--------	--

6.10.2. Response properties

The response is a Dictionary where keys represent the corresponding code list type, and the value is an array of CodeListValue objects.

CodeListValue		
Code	string	Item code.
Value	string	Item value.
Parameters	Dictionary<string, string>	Additional parameters for the item, depending on the code list: <ul style="list-style-type: none"> • LocalActivityCode: <ul style="list-style-type: none"> ○ Industry – Letter of the industry the code is classified in. Refers to the code list LocalActivityIndustry.

6.10.3. Example request

```

GET
https://api.hithorizons.com/Company/CodeLists/LocalActivityCodes?LocalActivityCodeType=015 HTTP/1.1
Host: api.hithorizons.com
Ocp-Apim-Subscription-Key: .....
    
```

6.10.4. Example response

```
Content-Type: application/json; charset=utf-8
{
  "Success": true,
  "Error": null,
  "Result": {
    "LocalActivityIndustry": [
      {
        "Code": "A",
        "Value": "Agriculture, forestry and fishing",
        "Parameters": null
      },
      {
        "Code": "B",
        "Value": "Mining and quarrying",
        "Parameters": null
      },
      ...
    ],
    "LocalActivityCode": [
      {
        "Code": "0000Z",
        "Value": "Non-classified activity",
        "Parameters": {
          "Industry": "X"
        }
      },
      ...
    ]
  }
}
```

6.11. ENDPOINT /Analytics/Sector

Starter

Grow

Pro

This endpoint allows you to retrieve industry analyses for displaying in analytics software or for further processing.

6.11.1. Request parameters

Type	string	Segment type. Available types: ALL country-industry region-industry region-siccode country-stateprovince country region industry siccode
StateProvince	string	Segment state/province. Relevant for types: country-stateprovince Available values are country-dependent. You can use values from the company search or company detail.
Country	string	Segment country. Relevant for types: country-industry country-stateprovince country Here is the List of countries that can be used.
Region	string	Segment region. Relevant for types: region-industry region-siccode region Available values: eu27 noneu27 asia
SICCode	string	Segment SIC code. Relevant for types: region-siccode siccode Available values: https://www.hithorizons.com/services/api/code-lists#sicCode

Industry	string	Segment industry. Relevant for types: country-industry region-industry industry Available values: https://www.hithorizons.com/services/api/code-lists#industry
-----------------	--------	--

6.11.2. Response properties

The response is a SectorAnalytics object:

SectorAnalytics		
CompanyCount	int	Number of companies in the industry.
SalesAnalytics	ApiSectorInfo	Sales analytics for the industry.
EmployeesAnalytics	ApiSectorInfo	Employees analytics for the industry.

ApiSectorInfo		
CompanyCountWithData	int	Number of companies in the industry with sales/employees data available.
Max	double	Maximum value.
MarketSize	double	Sum of all values in the industry.
Average	double	Average value in the industry.
Median	double	Median value in the industry.
DecileBounds	double array	Array of 11 values indicating bounds of 10 decile intervals. 10 % of the companies with data belong to each decile.
Histogram	HistogramPoint array	Array of HistogramPoint values.

TopCompanies	TopCompanyInfo array	List of largest companies by the corresponding parameter (Sales or Employee count).
---------------------	----------------------	---

HistogramPoint		
Bound	double	Upper bound of histogram interval. Companies with values up to this value (inclusive) are counted in this histogram range. Null for the last interval (values higher than the bound of the previous interval).
Count	int	Number of companies in this histogram range.

TopCompanyInfo		
HitHorizonsId	string	A unique company identification number assigned by HitHorizons.
CompanyName	string	Official name of the company.
SalesEUR	double	Sales for the business in Euro. The currency exchange rate is updated once a year. Signed decimal field.
EmployeesNumber	integer	The number of employees in the company.
HitHorizonsCompanyProfileURL	string	URL of the company profile at HitHorizons.com.

6.11.3. Example request

```
GET https://api.hithorizons.com/Analytics/Sector?Type=country-
industry&Country=slovakia&Industry=I HTTP/1.1
Host: api.hithorizons.com
Ocp-Apim-Subscription-Key: .....
```

6.11.4. Example response

```
Content-Type: application/json; charset=utf-8
{
  "Success": true,
  "Error": null,
  "Result": {
    "CompanyCount": 344335,
    "SalesAnalytics": {
      "CompanyCountWithData": 344078,
      "Max": 1101937204,
      "MarketSize": 51761874467,
      "Average": 150436.4547195694,
      "Median": 20424,
      "DecileBounds": [ 0, 1, 1117, 13533, 15260, 20424, 24529, 28596, 42891,
116045, 1101937204 ],
      "Histogram": [
        { "Bound": 0, "Count": 7 },
        { "Bound": 10000, "Count": 96528 },
        { "Bound": 20000, "Count": 72185 },
        { "Bound": 30000, "Count": 78379 },
        { "Bound": 40000, "Count": 17072 },
        { "Bound": 50000, "Count": 25769 },
        { "Bound": 60000, "Count": 5317 },
        { "Bound": 70000, "Count": 3425 },
        { "Bound": 80000, "Count": 2770 },
        { "Bound": 90000, "Count": 2597 },
        { "Bound": 100000, "Count": 2235 },
        { "Bound": 125000, "Count": 4812 },
        { "Bound": 150000, "Count": 4189 },
        { "Bound": 200000, "Count": 5026 },
        { "Bound": 300000, "Count": 5986 },
        { "Bound": 400000, "Count": 3575 },
        { "Bound": 500000, "Count": 2115 },
        { "Bound": 1000000, "Count": 5468 },
        { "Bound": 2000000, "Count": 3516 },
        { "Bound": 3000000, "Count": 1138 },
        { "Bound": 5000000, "Count": 853 },
        { "Bound": 10000000, "Count": 577 },
        { "Bound": 20000000, "Count": 308 },
        { "Bound": null, "Count": 231 }
      ]
    },
  },
  "EmployeesAnalytics": {
    "CompanyCountWithData": 344335,
    "Max": 5436,
    "MarketSize": 963960,
    "Average": 2.799483061553429,
    "Median": 1,
    "DecileBounds": [ 0, 1, 1, 1, 1, 1, 1, 1, 2, 3, 5436 ],
    "Histogram": [
      { "Bound": 0, "Count": 317 },

```



```
{ "Bound": 1, "Count": 242581 },
  { "Bound": 5, "Count": 87057 },
  { "Bound": 10, "Count": 5662 },
  { "Bound": 25, "Count": 4270 },
  { "Bound": 50, "Count": 2483 },
  { "Bound": 100, "Count": 1336 },
  { "Bound": 250, "Count": 420 },
  { "Bound": 500, "Count": 107 },
  { "Bound": 750, "Count": 44 },
  { "Bound": 1000, "Count": 21 },
  { "Bound": 2500, "Count": 32 },
  { "Bound": 5000, "Count": 4 },
  { "Bound": null, "Count": 1 }
]
}
```

6.12.ENDPOINT /Screener/List



This endpoint allows you to retrieve a set of companies based on a set of filtering criteria. The Screener endpoints provide functionality similar to the web-based HitHorizons Screener via the API.

This POST endpoint accepts parameters in two formats:

- Form data (Content-Type: application/x-www-form-urlencoded) – data in the same format as the web-based Screener in the request body.
- JSON (Content-Type: application/json) – data serialized in JSON format.

6.12.1. Request parameters

HitHorizonsIds	string array	Array of HitHorizonsId values to include in the set.
DUNSNumber	string	DUNS number to filter.
CompanyName	string	Filtered company name.
NationalId	string	Filtered national ID.
AddressUnstructured	string array	Strings to search for in all address fields. Multiple values can be provided. All words from each individual value need to be present in a single address field. When multiple values are provided, companies matching any of the values are filtered. Example: Provided values: ["London", "Abbey Road"]. In this case, companies from London, along with companies located at Abbey Road (in any city) are filtered.
AddressStreet	string array	Strings to search for in the street address field. Multiple values can be provided. All words from each individual value need to be present in the street address field. When multiple values are provided, companies matching any of the values are filtered.
PostalCode	string array	Strings to search for in the postal code field. Multiple values can be provided. All words from each individual value need to be present in the postal code field. When multiple values are provided, companies matching any of the values are filtered.
City	string array	Strings to search for in the city field. Multiple values can be provided. All words from each individual value need to be

		present in the city field. When multiple values are provided, companies matching any of the values are filtered.
StateProvince	string array	Strings to search for in the State/Province field. Multiple values can be provided. All words from each individual value need to be present in the State/Province field. When multiple values are provided, companies matching any of the values are filtered.
Country	string array	Countries to filter the companies in. Full English country names are supported. To find the full list of the country names, view the country list or use the data available in the <code>/Screeener/FilterOptions</code> endpoint. This field accepts 2-letter ISO country codes. Multiple values are supported.
SICCode	string array	SIC Codes of the filtered companies.
Industry	string array	Industries of the filtered companies.
LocalActivityCode	string array	Local Activity Codes of the filtered companies.
LocalActivityCodeType	string array	Local Activity Code Types of the filtered companies.
EstablishmentOfOwnershipFrom	int	Earliest EstablishmentOfOwnership year value to filter (inclusive).
EstablishmentOfOwnershipTo	int	Latest EstablishmentOfOwnership year value to filter (inclusive).
SalesEURFrom	long	Lowest SalesEUR value to filter (inclusive).
SalesEURTo	long	Highest SalesEUR value to filter (inclusive).
IncludeUnknownSales	bool	When set to false, only companies with not null SalesEur values will be filtered. Default: true.
SalesAccuracyIndicator	string array	Values of Sales Accuracy indicator to filter: 0 - actual 1 - low end of a range 2 - estimated, or not available when sales value is zero 3 - modeled

EmployeesNumberFrom	int	Lowest EmployeesNumber value to filter (inclusive).
EmployeesNumberTo	int	Highest EmployeesNumber value to filter (inclusive).
IncludeUnknownEmployees	bool	When set to false, only companies with not null EmployeesNumber values will be filtered. Default: true.
EmployeesAccuracyIndicator	string array	<p>Values of Employees Number Accuracy indicator to filter:</p> <ul style="list-style-type: none"> 0 - actual 1 - low end of the range 2 - estimated, or not available when the number of employees is zero 3 - modeled
LocationType	int array	<p>Location Types of the filtered companies:</p> <ul style="list-style-type: none"> 0 = Single Location - no other entities report to it 1 = Headquarter/Parent - branches and/or subsidiaries report to it 2 = Branch - secondary location to a headquarter null value = unknown type <p>When not provided, no filtering is done – companies with all values of Location Type field are returned. This is a notable difference from the web-based screener. In the web-based screener, only values null, 0, and 1 (Unknown, Single location company and Parent company) are filtered when no values are explicitly provided.</p> <p>When sending a null value:</p> <ul style="list-style-type: none"> • use null when sending the value as JSON, • use empty string when sending the value as a POST parameter.
CompanyType	int array	Company Types of the filtered companies.
HasWebsite	bool	When set to true, only companies with website information will be filtered.
HasEmail	bool	When set to true, only companies with email information will be filtered.
HasEmailDomain	bool	When set to true, only companies with email domain information will be filtered.

HasPhone	bool	When set to true, only companies with phone information will be filtered.
HasLinkedInURL	bool	When set to true, only companies with LinkedIn profile will be filtered.
HasFacebookURL	bool	When set to true, only companies with Facebook profile will be filtered.
HasInstagramURL	bool	When set to true, only companies with Instagram profile will be filtered.
HasTikTokURL	bool	When set to true, only companies with TikTok profile will be filtered.
HasXURL	bool	When set to true, only companies with X profile will be filtered.
HasYouTubeURL	bool	When set to true, only companies with YouTube channel will be filtered.
HasGitHubURL	bool	When set to true, only companies with GitHub profile will be filtered.
Website	string	Value to search for in company website addresses.
Email	string	Value to search for in company email addresses.
EmailDomain	string	Value to search for in company email domains.
Phone	string	Value to search for in company phone contacts.
LinkedInURL	string	Value to search for in company LinkedIn profile.
FacebookURL	string	Value to search for in company Facebook profile.
InstagramURL	string	Value to search for in company Instagram profile.
TikTokURL	string	Value to search for in company TikTok profile.
XURL	string	Value to search for in company X profile.
YouTubeURL	string	Value to search for in company YouTube channel.
GitHubURL	string	Value to search for in company GitHub profile.

Sort	string	<p>Sorting of the results:</p> <ul style="list-style-type: none"> • Name, Name-desc: sort by Company name • Country, Country-desc: sort by Country • EstablishmentOfOwnership, EstablishmentOfOwnership-desc: sort by EstablishmentOfOwnership year • SalesEUR, SalesEUR-desc: sort by Sales • Employees, Employees-desc: sort by Employees Number <p>When no value is supplied, SalesEUR-desc is used by default.</p>
Page	int	<p>Page number to retrieve, indexed from 1. 1 by default.</p> <p>There is a limit that only first 100 000 filtered companies can be retrieved. When attempting to access companies that are deeper in the list, i.e., when Page * PageSize > 100000, an error will be returned.</p> <p>To access more companies, either use a more specific filter, or use a different sorting.</p>
PageSize	int	<p>Number of companies to return on the page retrieved. 10 by default. Maximum value of 100 is supported.</p> <p>It is possible to use the value 0 to retrieve only the number of matching companies, without retrieving the actual results.</p>

6.12.2. Response properties

CompanyScreenerResponse		
Results	CompanyScreenerResult array	
ResultsCount	integer	Number of companies returned in the response (field results).
TotalCount	integer	Number of all companies matching the query
Page	int	Effective page that was used. The page might be different from the requested page if there are not enough total filtered companies – the last page will be returned in such case.

PageSize	int	Effective page size that was used. The page size might be different from the requested page size, if the requested size is out of the supported range (0 to 100).
Sort	int	Effective sorting that was used.

CompanyScreenerResult		
HitHorizonsId	string	A unique company identification number assigned by HitHorizons.
DUNSNumber	string	9-digit non-indicative identification number assigned by D&B company.
CompanyName	string	Official name of the company
CompanySecondaryName	string	Secondary name, trade name or brand of the company, if used
AddressStreetLine1	string	Physical location of the company as referred to by a local authority (e.g., Business register), generally stated in the local language.
AddressStreetLine2	string	Physical location of the company as referred to by a local authority (e.g., Business register), generally stated in the local language.
PostalCode	string	Postal or zip code for the physical location.
City	string	Name of the city where the company is located. Generally, in the local language.
StateProvince	string	Name of the state/province, or county where the company is located. Generally, in the local language.
Country	string	English name of the country where the business is located.
CountryCode	string	ISO 3166-1 alpha-2 code of the country where the business is located.
Region	string	English name of the region belonging to the company's country

NationalId	string	Company identification number officially assigned and used in some countries for company incorporation and tax collection.
SICCode	string	Standard industrial classification code system categorizes business establishments according to the type of business activities. The SIC code of a parent/ultimate may include the activities of its subsidiaries. Some of the countries use different industrial classification (e.g., NACE). All inputs are converted to SIC Code as closely as possible.
Industry	string	Code of the SIC division, e.g., A - Agriculture, forestry and fishing. A table of code values is available here.
LocalActivityCode	string	This code represents the locally used activity code from the system indicated by the value in the field LocalActivityCodeType.
LocalActivityCodeType	string	System used for the local activity, for example NACE, UK SIC NAF, etc. A table of code values is available here.
EstablishmentOfOwnership	integer	A four-digit number representing the year that current ownership took control, or the incorporation year if no control change took place.
SalesEUR	double	Sales for the business in Euro. The currency exchange rate is updated once a year. Signed decimal field.
SalesAccuracyIndicator	string	A code value which describes the reliability of the annual sales figure. 0 - actual 1 - low end of a range 2 - estimated, or not available when sales value is zero 3 - modeled blank - not available when SalesLocal equals 0 or is unknown.
HitHorizonsSalesSizeRanking	integer	Single number indicating which decile the company belongs to in the industry. 1 is the lowest decile, 10 is the highest decile.
EmployeesNumber	Integer	The number of employees in the company.

EmployeesNumberAccuracyIndicator	string	A code value which describes the reliability of the number of employees. 0 - actual 1 - low end of the range 2 - estimated, or not available when the number of employees is zero 3 - modeled blank - not available when EmployeesNumber equals 0 or is unknown.
HitHorizonsEmployeesSizeRanking	integer	Single number indicating which decile the company belongs to in the industry. 1 is the lowest decile, 10 is the highest decile.
CompanyType	integer	Legal status of this company. Table is available here.
LocationType	integer	This code indicates whether the business is: 0 = Single Location - no other entities report to it 1 = Headquarter/Parent - branches and/or subsidiaries report to it 2 = Branch - secondary location to a headquarter Note: It is possible to have a single location subsidiary or a headquarter subsidiary. A headquarters can also be a parent with subsidiaries. The code is blank when not available.
Websites	string array	Addresses of the websites associated with the company.
Emails	string array	Email contacts associated with the company.
EmailDomains	string array	Domains of the email contacts associated with the company. The leading at-sign (@) is included in the domain text.
Phones	string array	Phone contacts associated with the company.
HitHorizonsCompanyProfileURL	string	URL of the company profile at HitHorizons.com.
HitHorizonsContactFinderURL	string	URL of the contact finder at HitHorizons.com.
TopProductKeywords	string array	The TOP 3 most relevant product keywords associated with the company, if available
LinkedInURLs	string array	URLs of the company profile at LinkedIn

FacebookURLs	string array	URLs of the company profile at Facebook
InstagramURLs	string array	URLs of the company profile at Instagram.
TikTokURLs	string array	URLs of the company profile at TikTok.
XURLs	string array	URLs of the company profile at X.
YouTubeURLs	string array	URLs of the company channel at YouTube.
GitHubURLs	string array	URLs of the company profile at GitHub.

6.12.3. Example request

In this example, companies from Germany with sales less than or equal to 1 million EUR are filtered. Only the first two companies by sales are retrieved.

```
POST /Screener/List HTTP/1.1
Host: api.hithorizons.com
Ocp-Api-Subscription-Key: .....
Content-Type: application/x-www-form-urlencoded

Country=Germany&SalesEURTo=1000000&PageSize=2
```

An equivalent call is the following:

```
POST /Screener/List HTTP/1.1
Host: api.hithorizons.com
Ocp-Api-Subscription-Key: .....
Content-Type: application/json

{"Country":["Germany"],"SalesEURTo":1000000,"PageSize":2}
```

6.12.4. Example response

```
Content-Type: application/json; charset=utf-8
X-HHAPI-Screener-Limit-Monthly: 100000
X-HHAPI-Screener-Usage-Monthly: 4696
{
  "Success": true,
```

```

"Error": null,
"Result": {
  "Results": [
    {
      "HitHorizonsId": "H-DE1178612276",
      "DUNSNumber": "312599580",
      "CompanyName": "Zambelli RIB-ROOF GmbH & Co. KG",
      "CompanySecondaryName": "",
      "AddressStreetLine1": "Hans-Sachs-Str. 3+-5",
      "AddressStreetLine2": "",
      "PostalCode": "94569",
      "City": "Stephansposching",
      "StateProvince": "Bayern",
      "Country": "GERMANY",
      "CountryCode": "DE",
      "Region": "DACH",
      "NationalId": "94469A3485",
      "SICCode": "3444",
      "Industry": "D",
      "LocalActivityCode": "",
      "LocalActivityCodeType": "000",
      "EstablishmentOfOwnership": 2020,
      "SalesEUR": 10000000,
      "SalesAccuracyIndicator": "2",
      "HitHorizonsSalesSizeRanking": 10,
      "EmployeesNumber": 40,
      "EmployeesNumberAccuracyIndicator": "3",
      "HitHorizonsEmployeesSizeRanking": 9,
      "CompanyType": 3,
      "LocationType": 0,
      "Websites": [
        "http://www.zambelli.de"
      ],
      "Emails": [
        "rib-roof@zambelli.de"
      ],
      "EmailDomains": [
        "@zambelli.de"
      ],
      "Phones": null,
      "HitHorizonsCompanyProfileURL": "https://www.hithorizons.com/eu/companies/H-DE1178612276/zambelli-rib-roof-gmbh-co-kg",
      "HitHorizonsContactFinderURL": "https://localhost:5001/eu/companies/H-DE1178612276/zambelli-rib-roof-gmbh-co-kg/contacts?version=html",
      "TopProductKeywords": null,
      "LinkedInURLs": [
        "https://linkedin.com/company/zambelli-rib-roof-gmbh-&-co-kg"
      ],
      "FacebookURLs": [
        "https://facebook.com/ZambelliGruppe"
      ]
    }
  ]
}

```

```

    ],
    "InstagramURLs": [
      "https://instagram.com/zambelli_gruppe"
    ],
    "TikTokURLs": null,
    "XURLs": null,
    "YouTubeURLs": null,
    "GitHubURLs": null
  },
  {
    "HitHorizonsId": "H-DE0001942506",
    "DUNSNumber": "312621965",
    "CompanyName": "WIS Westfälischer Industrieservice GmbH",
    "CompanySecondaryName": "",
    "AddressStreetLine1": "Delsterner Str. 106B",
    "AddressStreetLine2": "",
    "PostalCode": "58091",
    "City": "Hagen",
    "StateProvince": "Nordrhein-Westfalen",
    "Country": "GERMANY",
    "CountryCode": "DE",
    "Region": "DACH",
    "NationalId": "58097B7752",
    "SICCode": "7699",
    "Industry": "I",
    "LocalActivityCode": "",
    "LocalActivityCodeType": "000",
    "EstablishmentOfOwnership": 2007,
    "SalesEUR": 10000000,
    "SalesAccuracyIndicator": "2",
    "HitHorizonsSalesSizeRanking": 10,
    "EmployeesNumber": 100,
    "EmployeesNumberAccuracyIndicator": "3",
    "HitHorizonsEmployeesSizeRanking": 10,
    "CompanyType": 3,
    "LocationType": 0,
    "Websites": [
      "www.industrieanlagenwartung.de"
    ],
    "Emails": [
      "info@wis-gruppe.com"
    ],
    "EmailDomains": [
      "@wis-gruppe.com"
    ],
    "Phones": null,
    "HitHorizonsCompanyProfileURL": "https://www.hithorizons.com/eu/companies/H-DE0001942506/wis-westfalischer-industrieservice-gmbh",
    "HitHorizonsContactFinderURL": "https://localhost:5001/eu/companies/H-DE0001942506/wis-westfalischer-industrieservice-gmbh/contacts?version=html",
  }

```

```

        "TopProductKeywords": null,
        "LinkedInURLs": null,
        "FacebookURLs": null,
        "InstagramURLs": null,
        "TikTokURLs": null,
        "XURLs": null,
        "GitHubURLs": null
    }

],
"ResultsCount": 2,
"TotalCount": 5313551,
"Page": 1,
"PageSize": 2,
"Sort": null
}
}

```

6.12.5. Usage limits

Each company returned in the `/Screener/List` responses is counted towards the same monthly limit as the web-based screener exports.

The API rate limits are still active. However, the ordinary API limits are not applied in this case.

Example:

100 companies are requested in a single API call, but only 50 companies are returned due to very specific filtering criteria.

In this case, one API call is counted towards the minute rate limit. 50 companies are counted towards the monthly screener export limit. No usage is counted towards the daily and monthly API call quotas.

It is possible to request no companies (`PageSize=0`). In such a case, the response contains the number of matched companies in the field `TotalCount` but doesn't count against the monthly screener export limit. It does count as an API call for rate limiting purposes.

The information about screener export limits and usage is returned in the HTTP response headers as follows:

```

X-HHAPI-Screener-Limit-Monthly: 100000
X-HHAPI-Screener-Usage-Monthly: 4696

```

The limits are reset at the beginning of a calendar month.

6.13.ENDPOINT /Screeener/FilterOptions

Grow

Pro

This endpoint allows you to retrieve the available options for various filtering criteria. This is useful for populating dropdowns and showing the number of companies for each filter option to the user.

The entries for LocationType don't contain the information about the company count for each value.

6.13.1. Request parameters

There are no request parameters for this endpoint.

6.13.2. Response properties

The response is a Dictionary where keys represent the corresponding filtering parameters, and the value is an array of FilterOption objects.

FilterOption		
Code	string	The filtering value.
Value	string	Textual value representing the code value.
CompanyCount	int	Number of companies in the database with this value in the corresponding field.

6.13.3. Example request

```
GET https://api.hithorizons.com/Screeener/FilterOptions HTTP/1.1
Host: api.hithorizons.com
Ocp-Apim-Subscription-Key: .....
```

6.13.4. Example response

```
Content-Type: application/json; charset=utf-8
{
  "Success": true,
  "Error": null,
```

```
"Result": {
  "Country": [
    {
      "Code": "AD",
      "Value": "Andorra",
      "CompanyCount": 10240
    },
    ...
  ],
  "Industry": [
    {
      "Code": "a",
      "Value": "Agriculture, Forestry, and Fishing",
      "CompanyCount": 4865006
    },
    ...
  ],
  "SICCode": [
    {
      "Code": "0111",
      "Value": "Wheat farm",
      "CompanyCount": 66080
    },
    ...
  ],
  "CompanyType": ...,
  "EstablishmentOfOwnership": ...,
  "LocationType": ...
}
}
```

6.14.ENDPOINT /Screeener/FilterOptions/StateProvince

Grow

Pro

This endpoint allows you to retrieve the available options for the filtering field State/Province.

6.14.1. Request parameters

Country	string array	English country names for the available State/Province values to return. When not provided, all values are returned. This field accepts 2-letter ISO country codes. Multiple values are supported.
----------------	--------------	--

6.14.2. Response properties

The response is an array of FilterOptionStateProvince objects.

FilterOptionStateProvince		
StateProvince	string	The value of the State/Province.
Country	string	English name of the country where the State/Province is located.
CountryCode	int	2-letter ISO country code of the country.

6.14.3. Example request

```
GET https://api.hithorizons.com/Screeener/FilterOptions/StateProvince?Country=Germany
HTTP/1.1
Host: api.hithorizons.com
Ocp-Apim-Subscription-Key: .....
```

6.14.4. Example response

```
Content-Type: application/json; charset=utf-8
{
```



```
"Success": true,  
"Error": null,  
"Result": [  
  {  
    "StateProvince": "",  
    "Country": "GERMANY",  
    "CountryCode": "DE"  
  },  
  {  
    "StateProvince": "Baden-Württemberg",  
    "Country": "GERMANY",  
    "CountryCode": "DE"  
  },  
  {  
    "StateProvince": "Bayern",  
    "Country": "GERMANY",  
    "CountryCode": "DE"  
  },  
  ...  
]  
}
```

6.15.ENDPOINT /Screener/Export



This endpoint allows you to submit a request for a bulk export of a set of companies based on a set of filtering criteria.

This POST endpoint accepts parameters in two formats:

- Form data (Content-Type: application/x-www-form-urlencoded) – data in the same format as the web-based Screener in the request body.
- JSON (Content-Type: application/json) – data serialized in JSON format.

The export will be processed in background and the data will be available for retrieval after the processing finishes.

After processing, the exported data will be available for 30 days. After this period, the data will be automatically deleted. If you need to work with the exported data after 30 days, you need to keep a copy of the prepared export.

6.15.1. Request parameters

ScreenerExportParameters		
HitHorizonsIds	string array	Array of HitHorizonsId values to include in the set.
DUNSNumber	string	DUNS number to filter.
CompanyName	string	Filtered company name.
NationalId	string	Filtered national ID.
AddressUnstructured	string array	Strings to search for in all address fields. Multiple values can be provided. All words from each individual value need to be present in a single address field. When multiple values are provided, companies matching any of the values are filtered. Example: Provided values: ["London", "Abbey Road"]. In this case, companies from London, along with companies located at Abbey Road (in any city) are filtered.
AddressStreet	string array	Strings to search for in the street address field. Multiple values can be provided. All words from each individual value need to be present in the street address field. When multiple

		values are provided, companies matching any of the values are filtered.
PostalCode	string array	Strings to search for in the postal code field. Multiple values can be provided. All words from each individual value need to be present in the postal code field. When multiple values are provided, companies matching any of the values are filtered.
City	string array	Strings to search for in the city field. Multiple values can be provided. All words from each individual value need to be present in the city field. When multiple values are provided, companies matching any of the values are filtered.
StateProvince	string array	Strings to search for in the State/Province field. Multiple values can be provided. All words from each individual value need to be present in the State/Province field. When multiple values are provided, companies matching any of the values are filtered.
Country	string array	Countries to filter the companies in. Full English country names are supported. To find the full list of the country names, view the country list or use the data available in the <code>/Screener/FilterOptions</code> endpoint. This field accepts 2-letter ISO country codes. Multiple values are supported.
SICCode	string array	SIC Codes of the filtered companies.
Industry	string array	Industries of the filtered companies.
LocalActivityCode	string	Local Activity Codes of the filtered companies.
LocalActivityCodeType	string	Local Activity Code Types of the filtered companies.
EstablishmentOfOwnershipFrom	int	Earliest EstablishmentOfOwnership year value to filter (inclusive).
EstablishmentOfOwnershipTo	int	Latest EstablishmentOfOwnership year value to filter (inclusive).
SalesEURFrom	long	Lowest SalesEUR value to filter (inclusive).
SalesEURTo	long	Highest SalesEUR value to filter (inclusive).

IncludeUnknownSales	bool	When set to false, only companies with not null SalesEur values will be filtered. Default: true.
SalesAccuracyIndicator	string array	Values of Sales Accuracy indicator to filter: 0 - actual 1 - low end of a range 2 - estimated, or not available when sales value is zero 3 - modeled
EmployeesNumberFrom	int	Lowest EmployeesNumber value to filter (inclusive).
EmployeesNumberTo	int	Highest EmployeesNumber value to filter (inclusive).
IncludeUnknownEmployees	bool	When set to false, only companies with not null EmployeesNumber values will be filtered. Default: true.
EmployeesAccuracyIndicator	string array	Values of Employees Number Accuracy indicator to filter: 0 - actual 1 - low end of the range 2 - estimated, or not available when the number of employees is zero 3 - modeled
LocationType	int array	<p>Location Types of the filtered companies: 0 = Single Location - no other entities report to it 1 = Headquarter/Parent - branches and/or subsidiaries report to it 2 = Branch - secondary location to a headquarter null value = unknown type</p> <p>When not provided, no filtering is done – companies with all values of Location Type field are returned. This is a notable difference from the web-based screener. In the web-based screener, only values null, 0, and 1 (Unknown, Single location company and Parent company) are filtered when no values are explicitly provided.</p> <p>When sending a null value:</p> <ul style="list-style-type: none"> • use null when sending the value as JSON, • use empty string when sending the value as a POST parameter.
CompanyType	int array	Company Types of the filtered companies.

HasWebsite	bool	When set to true, only companies with website information will be filtered.
HasEmail	bool	When set to true, only companies with email information will be filtered.
HasEmailDomain	bool	When set to true, only companies with email domain information will be filtered.
HasPhone	bool	When set to true, only companies with phone information will be filtered.
HasLinkedInURL	bool	When set to true, only companies with LinkedIn profile will be filtered.
HasFacebookURL	bool	When set to true, only companies with Facebook profile will be filtered.
HasInstagramURL	bool	When set to true, only companies with Instagram profile will be filtered.
HasTikTokURL	bool	When set to true, only companies with TikTok profile will be filtered.
HasXURL	bool	When set to true, only companies with X profile will be filtered.
HasYouTubeURL	bool	When set to true, only companies with YouTube channel will be filtered.
HasGitHubURL	bool	When set to true, only companies with GitHub profile will be filtered.
Website	string	Value to search for in company website addresses.
Email	string	Value to search for in company email addresses.
EmailDomain	string	Value to search for in company email domains.
Phone	string	Value to search for in company phone contacts.
LinkedInURL	string	Value to search for in company LinkedIn profile.
FacebookURL	string	Value to search for in company Facebook profile.

InstagramURL	string	Value to search for in company Instagram profile.
TikTokURL	string	Value to search for in company TikTok profile.
XURL	string	Value to search for in company X profile.
YouTubeURL	string	Value to search for in company YouTube channel.
GitHubURL	string	Value to search for in company GitHub profile.
Sort	string	<p>Sorting of the results:</p> <ul style="list-style-type: none"> • Name, Name-desc: sort by Company name • Country, Country-desc: sort by Country • EstablishmentOfOwnership, EstablishmentOfOwnership-desc: sort by EstablishmentOfOwnership year • SalesEUR, SalesEUR-desc: sort by Sales • Employees, Employees-desc: sort by Employees Number <p>When no value is supplied, SalesEUR-desc is used by default.</p>
CountLimit	int	<p>Limit of companies to export. Maximum value of 50000 in a single export is the default unless set otherwise.</p> <p>If the remaining monthly quota is less than the requested value, the export request won't be accepted. Refer to section 6.12.5 for details about the screener limits.</p>
Title	string	Title of the export for your reference.
Comment	string	Comment for your reference.
NotificationEmail	string	<p>Optional email address where notification about the completed import will be sent.</p> <p>If not provided, the notification won't be sent.</p>

6.15.2. Response properties

CompanyScreenerExportResponse		
RequestSuccessful	bool	Indicates whether the export request was accepted.

RequestId	string	ID of the export request.
Request	CompanyScreenerExportResult	Data for the screener export request.
FailureReason	string	When RequestSuccessful is false, contains the reason for the failure.
MonthlyLimit	int	Monthly limit of companies to retrieve via screener (jointly for all licenses for a customer account).
MonthlyUsage	int	Usage of the companies retrieved via screener (jointly for all licenses for a customer account).
MonthlyLicenseLimit	int	Monthly limit of companies to retrieve via screener (for the subscription license).
MonthlyLicenseUsage	int	Usage of the companies retrieved via screener (for the subscription license).

CompanyScreenerExportResult		
Id	string	ID of the export request.
SubscriptionId	string	Subscription ID for the request.
NotificationEmail	string	Email address for email notification.
Title	string	Title of the export for your reference.
Comment	string	Comment for your reference.
CountLimit	Int	Maximum number of companies to export.
Parameters	ScreenerExportParameters	Screener export parameters provided in the request. See above for structure (section 6.15.1 Request parameters).
Submitted	DateTime	Date/time when the export was submitted.
Started	DateTime	Date/time when the export processing started. Null when the export is queued.

Finished	DateTime	Date/time when the export processing finished. Null when not finished yet.
Failed	DateTime	Date/time when the export processing failed. Null when successfully finished or not failed.
FailureReason	string	Reason for failure. Null when successfully finished or not failed.
ResultUrl	string	URL where the screener export can be downloaded. This will be available after the processing is finished.

6.15.3. Example request

In this example, companies from Germany with sales less than or equal to 1 million EUR are filtered and the export of maximum of 1000 companies is requested.

```
POST /Screener/Export HTTP/1.1
Host: api.hithorizons.com
Ocp-Apim-Subscription-Key: .....
Content-Type: application/x-www-form-urlencoded

Country=Germany&SalesEURTo=1000000&CountLimit=1000
```

An equivalent call is the following:

```
POST /Screener/Export HTTP/1.1
Host: api.hithorizons.com
Ocp-Apim-Subscription-Key: .....
Content-Type: application/json

{"Country":["Germany"],"SalesEURTo":1000000,"CountLimit":1000}
```

6.15.4. Example response

```
Content-Type: application/json; charset=utf-8
X-HHAPI-Screener-Limit-Monthly: 100000
X-HHAPI-Screener-Usage-Monthly: 5696
{
  "Success": true,
  "Error": null,
```



```
"Result": {
  "RequestSuccessful": true,
  "RequestId": "hithorizons-test-api-full-2024-09-02-14-23-01",
  "Request": {
    "Id": "hithorizons-test-api-full-2024-09-02-14-23-01",
    "SubscriptionId": "hithorizons-test-api-full",
    "NotificationEmail": null,
    "Title": null,
    "Comment": null,
    "CountLimit": 1000,
    "Parameters": {
      "HitHorizonsIds": null,
      "DUNSNumber": null,
      "CompanyName": null,
      "NationalId": null,
      "AddressUnstructured": null,
      "AddressStreet": null,
      "PostalCode": null,
      "City": null,
      "StateProvince": null,
      "Country": [
        "Germany"
      ],
      "SICCode": null,
      "Industry": null,
      "LocalActivityCode": null,
      "LocalActivityCodeType": null,
      "EstablishmentOfOwnershipFrom": null,
      "EstablishmentOfOwnershipTo": null,
      "SalesEURFrom": null,
      "SalesEURTo": 1000000,
      "IncludeUnknownSales": true,
      "SalesAccuracyIndicator": null,
      "EmployeesNumberFrom": null,
      "EmployeesNumberTo": null,
      "IncludeUnknownEmployees": true,
      "EmployeesAccuracyIndicator": null,
      "LocationType": null,
      "CompanyType": null,
      "HasWebsite": null,
      "HasEmail": null,
      "HasEmailDomain": null,
      "HasPhone": null,
      "HasLinkedInURL": null,
      "HasFacebookURL": null,
      "HasInstagramURL": null,
      "HasTikTokURL": null,
      "HasXURL": null,
      "HasYouTubeURL": null,
      "HasGitHubURL": null,
    }
  }
}
```

```
    "Website": null,  
    "Email": null,  
    "EmailDomain": null,  
    "Phone": null,  
    "LinkedInURL": null,  
    "FacebookURL": null,  
    "InstagramURL": null,  
    "TikTokURL": null,  
    "XURL": null,  
    "YouTubeURL": null,  
    "GitHubURL": null,  
    "Sort": null,  
    "CountLimit": 1000,  
    "Title": null,  
    "Comment": null,  
    "NotificationEmail": null  
  },  
  "Submitted": "2024-09-02T14:23:01.7806645Z",  
  "Started": null,  
  "Finished": null,  
  "Failed": null,  
  "FailureReason": null,  
  "ResultUrl": null  
},  
"FailureReason": null,  
"MonthlyLimit": 100000,  
"MonthlyUsage": 5696,  
"MonthlyLicenseLimit": null,  
"MonthlyLicenseUsage": null  
}  
}
```

6.16.ENDPOINT /Screener/GetExport

Grow

Pro

This endpoint allows you to retrieve data for an export that was previously requested. You can use this endpoint to check whether the export is already processed and to retrieve the results, if available.

6.16.1. Request parameters

Id	string	Screener export request ID.
----	--------	-----------------------------

6.16.2. Response properties

Please refer to the structure of CompanyScreenerExportResult above (section 6.15.2).

6.16.3. Example request

```
GET https://api.hithorizons.com/Screener/GetExport?Id=hithorizons-test-api-full-2024-09-02-14-23-01 HTTP/1.1
Host: api.hithorizons.com
Ocp-Apim-Subscription-Key: .....
```

6.16.4. Example response

```
Content-Type: application/json; charset=utf-8
{
  "Success": true,
  "Error": null,
  "Result": {
    "Id": "hithorizons-test-api-full-2024-09-02-14-23-01",
    "SubscriptionId": "hithorizons-test-api-full",
    "NotificationEmail": null,
    "Title": null,
    "Comment": null,
    "CountLimit": 1000,
    "Parameters": {
      "HitHorizonsIds": null,
      "DUNSNumber": null,

```

```
"CompanyName": null,
"NationalId": null,
"AddressUnstructured": null,
"AddressStreet": null,
"PostalCode": null,
"City": null,
"StateProvince": null,
"Country": [
  "Germany"
],
"SICCode": null,
"Industry": null,
"LocalActivityCode": null,
"LocalActivityCodeType": null,
"EstablishmentOfOwnershipFrom": null,
"EstablishmentOfOwnershipTo": null,
"SalesEURFrom": null,
"SalesEURTo": 1000000,
"IncludeUnknownSales": true,
"SalesAccuracyIndicator": null,
"EmployeesNumberFrom": null,
"EmployeesNumberTo": null,
"IncludeUnknownEmployees": true,
"EmployeesAccuracyIndicator": null,
"LocationType": null,
"CompanyType": null,
"HasWebsite": null,
"HasEmail": null,
"HasEmailDomain": null,
"HasPhone": null,
"HasLinkedInURL": null,
"HasFacebookURL": null,
"HasInstagramURL": null,
"HasTikTokURL": null,
"HasXURL": null,
"HasYouTubeURL": null,
"HasGitHubURL": null,
"Website": null,
"Email": null,
"EmailDomain": null,
"Phone": null,
"LinkedInURL": null,
"FacebookURL": null,
"InstagramURL": null,
"TikTokURL": null,
"XURL": null,
"YouTubeURL": null,
"GitHubURL": null,
"Sort": null,
"CountLimit": 1000,
```

```
    "Title": null,  
    "Comment": null,  
    "NotificationEmail": null  
  },  
  "Submitted": "2024-09-02T14:23:01.7806645Z",  
  "Started": null,  
  "Finished": null,  
  "Failed": null,  
  "FailureReason": null,  
  "ResultUrl": null  
}
```

6.17.ENDPOINT /Screener/GetExports

Grow

Pro

This endpoint allows you to retrieve past screener exports.

6.17.1. Request parameters

Title	string	Text to search in titles.
Comment	string	Text to search in comments
SubmittedFrom	DateTime	Retrieve only exports submitted after this time.
SubmittedTo	DateTime	Retrieve only exports submitted before this time.
Page	int	Page number to retrieve, indexed from 1. 1 by default.
PageSize	int	Number of exports to return on the page retrieved. 10 by default. Maximum value of 100 is supported.

6.17.2. Response parameters

CompanyScreenerExportListResponse		
Results	CompanyScreenerExportListResult array	Filtered exports.
ResultsCount	integer	Number of exports returned in the response (field results).
TotalCount	integer	Number of all exports matching the query.
Page	int	Effective page that was used. The page might be different from the requested page if there are not enough total filtered exports – the last page will be returned in such case.

PageSize	int	Effective page size that was used. The page size might be different from the requested page size, if the requested size is out of the supported range (0 to 100).
-----------------	-----	---

CompanyScreenerExportListResult		
Id	string	ID of the export request.
SubscriptionId	string	Subscription ID for the request.
NotificationEmail	string	Email address for email notification.
Title	string	Title of the export for your reference.
Comment	string	Comment for your reference.
CountLimit	string	Maximum number of companies to export.
Submitted	string	Date/time when the export was submitted.
Started	string	Date/time when the export processing started. Null when the export is queued.
Finished	string	Date/time when the export processing finished. Null when not finished yet.
Failed	string	Date/time when the export processing failed. Null when successfully finished or not failed.
FailureReason	string	Reason for failure. Null when successfully finished or not failed.
ResultUrl	string	URL where the screener export can be downloaded. This will be available after the processing is finished.

6.17.3. Example request

```
GET https://api.hithorizons.com/Screeener/GetExports?SubmittedFrom=2024-09-02&PageSize=1 HTTP/1.1
Host: api.hithorizons.com
Ocp-Apim-Subscription-Key: .....
```

6.17.4. Example response

```
Content-Type: application/json; charset=utf-8
{
  "Success": true,
  "Error": null,
  "Result": {
    "Results": [
      {
        "Id": "hithorizons-test-api-full-2024-09-02-14-23-01",
        "SubscriptionId": "hithorizons-test-api-full",
        "NotificationEmail": null,
        "Title": null,
        "Comment": null,
        "CountLimit": 1000,
        "Submitted": "2024-09-02T14:23:01.7806645Z",
        "Started": "2024-09-02T14:23:42.1457863Z",
        "Finished": "2024-09-02T14:24:03.6548934Z",
        "Failed": null,
        "FailureReason": null,
        "ResultUrl":
"https://hhuserdatascreenerexport.blob.core.windows.net/screenerexport/export-2024-09-02-14-23-01-5d10...2365.zip"
      }
    ],
    "ResultsCount": 1,
    "TotalCount": 7,
    "Page": 1,
    "PageSize": 1,
    "Sort": null
  }
}
```


6.18.ENDPOINT /Reports/SearchCompanies

Starter
Grow
Pro

This endpoint allows you to search for a company with available reports. After the user identifies the company for which to find available reports, the company data can be sent to the endpoint /Reports/SearchProducts. Use the endpoint /Reports/GetCountries to get a list of supported countries with the information about available providers in each country.

6.18.1. Request parameters

Name	string	Name of the company to search.
NationalId (optional)	string	When provided, a company with matching National ID will be prioritized in the resulting list.
Country	string	English name of the country where the search will be performed. The list of used providers depends on the country.
HitHorizonsId (optional)	string	When provided, the reports ordered for returned search results will be associated with this company in HitHorizons database. When provided, data of the company with given ID will be used to search with some providers. Please note that the data from the company don't override the value given in the other request parameters. Also, the required parameters need to have value even when this parameter is used.
Providers (optional)	string array	When provided, only the supplied providers will be used to search for companies. This can be used to speed up the search.

6.18.2. Response parameters

ReportCompanySearchResponse		
Results	ReportCompanySearchResult array	Search results from all providers, merged and sorted by relevance.
ResultsByProvider	Dictionary<string, ReportCompanySearchByProviderResults>	Search results returned by the individual providers.

ReportCompanySearchResult		
Provider	string	Name of the provider.
Country	string	Country name.
CompanyCode	string	Provider-specific company code.
CompanyName	string	Name of the found company.
CompanyAddress	string	Address of the found company.
CompanyInfo	Dictionary<string, string>	A Dictionary of additional company information. Varies by provider.
CompanyData	string	Company data to be sent to the /Reports/SearchProducts endpoint to search for products for this company.

ReportCompanySearchByProviderResults		
Provider	string	Name of the provider.
Status	ReportCompanySearchStatus	Status of the response from the provider
Results	ReportCompanySearchResult array	Search results from the provider.

ReportCompanySearchStatus		
StatusCode	string	Status code. OK indicates success. Other values indicate that the search failed with the provider.
Message	string	Message to be shown to the user when the status is not OK.

6.18.3. Example request

```
GET
https://api.hithorizons.com/Reports/SearchCompanies?Name=Nestl%C3%A9%20AG&NationalId=
CHE-105.909.036&Country=switzerland&HitHorizonsId=H-CH0060375620 HTTP/1.1
Host: api.hithorizons.com
Ocp-Apim-Subscription-Key: .....
```

6.18.4. Example response

```
Content-Type: application/json; charset=utf-8
{
  "Success": true,
  "Error": null,
  "Result": {
    "Results": [
      {
        "Provider": "CofaceV2",
        "Country": "Switzerland",
        "CompanyCode": "CH006/X/212874@pnp=CH/702",
        "CompanyName": "Nestlé AG",
        "CompanyAddress": "Zugerstrasse 8, 6330, Cham, CH",
        "CompanyInfo": {
          "Identifiers": "Registration Number: CHE-105.909.036 (Registration
Number)",
          "Address": "Zugerstrasse 8, 6330, Cham, CH"
        },
        "CompanyData": "/zDV...bA=="
      },
      {
        "Provider": "Propartner",
        "Country": "Switzerland",
        "CompanyCode": "Nestlé AG",
        "CompanyName": "Nestlé AG",
        "CompanyAddress": "Zugerstrasse 8, 6330, CHAM, ZUG, SWITZERLAND",
        "CompanyInfo": {
          "RegistrationCode": "CHE-105.909.036",
          "LegalAddress": "Zugerstrasse 8, 6330, CHAM, ZUG, SWITZERLAND"
        },
        "CompanyData": "t7gw...Zo="
      },
      {
        "Provider": "Kyckr",
        "Country": "Switzerland",
```

```

    "CompanyCode": "CHE-105.909.036",
    "CompanyName": "Nestlé AG",
    "CompanyAddress": "Cham",
    "CompanyInfo": {
      "Addresses": "Cham"
    },
    "CompanyData": "ERcL...Gw=="
  },
  ...
],
"ResultsByProvider": {
  "Kyckr": {
    "Provider": "Kyckr",
    "Status": {
      "StatusCode": "OK",
      "Message": ""
    },
    "Results": [
      {
        "Provider": "Kyckr",
        "Country": "Switzerland",
        "CompanyCode": "CHE-105.909.036",
        "CompanyName": "Nestlé AG",
        "CompanyAddress": "Cham",
        "CompanyInfo": {
          "Addresses": "Cham"
        },
        "CompanyData": "l6fl...Eg=="
      },
      ...
    ]
  },
  "Propartner": {
    "Provider": "Propartner",
    "Status": {
      "StatusCode": "OK",
      "Message": ""
    },
    "Results": [
      {
        "Provider": "Propartner",
        "Country": "Switzerland",
        "CompanyCode": "Nestlé AG",
        "CompanyName": "Nestlé AG",
        "CompanyAddress": "Zugerstrasse 8, 6330, CHAM, ZUG, SWITZERLAND",
        "CompanyInfo": {
          "RegistrationCode": "CHE-105.909.036",
          "LegalAddress": "Zugerstrasse 8, 6330, CHAM, ZUG, SWITZERLAND"
        },
        "CompanyData": "Jffz...aAo="
      }
    ]
  }
}

```

```
    }
  ]
},
"CofaceV2": {
  "Provider": "CofaceV2",
  "Status": {
    "StatusCode": "OK",
    "Message": ""
  },
  "Results": [
    {
      "Provider": "CofaceV2",
      "Country": "Switzerland",
      "CompanyCode": "CH006/X/11882@pnp=CH/702",
      "CompanyName": "Nestlé S.A.",
      "CompanyAddress": "Avenue Nestlé 55, 1800, Vevey, CH",
      "CompanyInfo": {
        "Identifiers": "Registration Number: CHE-105.909.036 (Registration
Number)",
        "Address": "Avenue Nestlé 55, 1800, Vevey, CH"
      },
      "CompanyData": "34c5...mEI="
    },
    ...
  ]
}
}
}
```

6.19.ENDPOINT /Reports/SearchProducts

Starter

Grow

Pro

This endpoint allows you to retrieve available reports and documents for a selected company from the respective report provider.

6.19.1. Request parameters

CompanyData	string	The value of CompanyData field of the selected company from the SearchCompanies call result.
--------------------	--------	--

6.19.2. Response parameters

ReportProductSearchResponse		
Status	ReportProductSearchStatus	Status of the response from the provider.
Results	ReportProductSearchResult array	Products available for purchase for the selected company.

ReportProductSearchStatus		
StatusCode	string	Status code. OK indicates success. Other values indicate that the search failed with the provider.
Message	string	Message to be shown to the user when the status is not OK.

ReportProductSearchResult		
Name	string	Name of the product or report.
Price	decimal	Price in EUR.
Delivery	string	Delivery speed information.

ProductData	string	Product data to be sent to the /Reports/OrderProduct endpoint to order this product.
--------------------	--------	--

6.19.3. Example request

```
POST https://api.hithorizons.com/Reports/SearchProducts HTTP/1.1
Host: api.hithorizons.com
Ocp-Apiim-Subscription-Key: .....

CompanyData=%2FzDV...bA%3D%3D
```

6.19.4. Example response

```
Content-Type: application/json; charset=utf-8
{
  "Success": true,
  "Error": null,
  "Result": {
    "Status": {
      "StatusCode": "OK",
      "Message": ""
    },
  },
  "Results": [
    {
      "Name": "Snapshot Report",
      "Price": 10,
      "Delivery": "immediate, prepared 2021-12-12",
      "ProductData": "d/5M...Sko="
    },
    {
      "Name": "DRA",
      "Price": 23,
      "Delivery": "immediate, prepared 2021-12-12",
      "ProductData": "6pMA...bqA="
    },
    {
      "Name": "@ Credit Opinion",
      "Price": 25,
      "Delivery": "immediate, prepared 2021-12-12",
      "ProductData": "tSkE...dnQA"
    },
    {
      "Name": "Full Report",
      "Price": 27,
```

```
    "Delivery": "immediate, prepared 2021-12-12",
    "ProductData": "6v/t...L1g="
  },
  {
    "Name": "Full Report",
    "Price": 35,
    "Delivery": "5-10 business days",
    "ProductData": "JulB...0kw="
  },
  {
    "Name": "Advanced Opinion",
    "Price": 37,
    "Delivery": "immediate, prepared 2021-12-12",
    "ProductData": "3YZq...olq/"
  }
]
}
```


6.20.ENDPOINT /Reports/OrderProduct

Starter
Grow
Pro

This endpoint allows you to order a report or document for a company from the respective report provider. The credit for the report is deducted from the customer account and the report is ordered. All reports are processed asynchronously.

6.20.1. Request parameters

ProductData	string	The value of ProductData field of the selected product from the SearchProducts call result.
Comment	string	Comment stored with the order.
NotificationEmail	string	Email address to notify after the product is processed. When not provided, no notification will be sent.

6.20.2. Response parameters

ReportProductOrderResult		
Success	bool	Indicates whether the product was ordered successfully.
FailureReason	string	Reason of the failure if the product was not ordered successfully.
OrderId	string	Id of the created order.

6.20.3. Example request

```

POST https://api.hithorizons.com/Reports/OrderProduct HTTP/1.1
Host: api.hithorizons.com
Ocp-Apim-Subscription-Key: .....
ProductData=d%2F5M...Sko%3D
    
```

6.20.4. Example response

```
Content-Type: application/json; charset=utf-8
{
  "Success": true,
  "Error": null,
  "Result": {
    "Success": true,
    "FailureReason": null,
    "OrderId": "dummy-switzerland-id-dummy-dummy-report-2022-05-01-01-23-45"
  }
}
```

6.21.ENDPOINT /Reports/GetOrder

Starter

Grow

Pro

This endpoint allows you to check the status of report processing and to retrieve results of the ordered report or document after the processing is finished.

6.21.1. Request parameters

OrderId	string	Id of the order to retrieve.
----------------	--------	------------------------------

6.21.2. Response parameters

ReportProductOrder		
Id	string	Order Id.
UserId	string	Id of the user who ordered the product.
UserName	string	Name of the user who ordered the product.
Comment	string	Comment stored with the order.
Email	string	Email of the user who ordered the product.
Price	decimal	Price in EUR.
Country	string	Country name.
CompanyCode	string	Provider-specific company code.
CompanyName	string	Name of the company.
CompanyAddress	string	Address of the company.
ProductName	string	Name of the ordered product.
Provider	string	Name of the provider.

Submitted	DateTime	Date/time of the order submission.
Started	DateTime	Date/time when the order processing was started. Null if the processing didn't start yet.
Finished	DateTime	Date/time when the order processing was finished. Null if the processing is still in progress.
Failed	DateTime	Date/time when the order processing failed. Null if the processing is still in progress or was completed successfully.
FailureReason	string	Reason of failure if the order processing failed.
CreditRefunded	bool	True if the order was refunded.
Results	ReportProductOrderResultFile array	Results of the order processing. Null if not yet available.

ReportProductOrderResultFile		
Url	string	URL with the result.
Format	string	Result format.

6.21.3. Example request

```
GET https://api.hithorizons.com/Reports/GetOrder?OrderId=dummy-switzerland-id-dummy-dummy-report-2022-05-01-01-23-45 HTTP/1.1
Host: api.hithorizons.com
Ocp-Apim-Subscription-Key: .....
```

6.21.4. Example response

```
Content-Type: application/json; charset=utf-8
{
  "Success": true,
  "Error": null,
```

```
"Result": {
  "Id": " dummy-switzerland-id-dummy-dummy-report-2022-05-01-01-23-45",
  "UserId": "user@example.com",
  "UserName": "Example User",
  "Comment": "my test comment",
  "HitHorizonsId": null,
  "Email": "user@example.com",
  "Price": 1,
  "Country": "Switzerland",
  "CompanyCode": "ID-Dummy",
  "CompanyName": "Dummy Company",
  "CompanyAddress": "Dummy street 1, Dummy City",
  "ProductName": "Dummy Credit Report",
  "Provider": "Dummy",
  "Submitted": "2022-05-01T01:23:45.0000000Z",
  "Started": "2022-05-01T01:24:45.0000000Z",
  "Finished": "2022-05-01T01:25:45.0000000Z",
  "Failed": null,
  "FailureReason": null,
  "CreditRefunded": false,
  "Results": null
}
}
```

6.22.ENDPOINT /Reports/GetOrders

Starter

Grow

Pro

This endpoint allows you to retrieve a list of all ordered reports.

6.22.1. Request parameters

Email	string	User email address to filter.
CompanyName	string	Search term in company name to filter.
CompanyCode	string	Company codes to filter
HitHorizonsId	string	HitHorizons ID of the company to show orders for.
ProductName	string	Product names to filter.
Country	string	Product country to filter.
Provider	string	Provider to filter.
SubmittedFrom	DateTime	Submission date to filter.
SubmittedTo	DateTime	Submission date to filter.
Page	Int	Page number to retrieve, indexed from 1. 1 by default.
PageSize	int	Number of exports to return on the page retrieved. 10 by default. Maximum value of 100 is supported.

6.22.2. Response parameters

ReportOrderListResponse		
Results	ReportOrderList Result array	Filtered orders.
ResultsCount	integer	Number of orders returned in the response (field results).
TotalCount	integer	Number of all orders matching the query

Page	int	Effective page that was used. The page might be different from the requested page if there are not enough total filtered orders – the last page will be returned in such case.
PageSize	int	Effective page size that was used. The page size might be different from the requested page size, if the requested size is out of the supported range (0 to 100).

6.22.3. Example request

```
GET https://api.hithorizons.com/Reports/GetOrders?CompanyCode=ID-Dummy&PageSize=1
HTTP/1.1
Host: api.hithorizons.com
Ocp-Apim-Subscription-Key: .....
```

6.22.4. Example response

```
Content-Type: application/json; charset=utf-8
{
  "Success": true,
  "Error": null,
  "Result": {
    "Results": [
      {
        "Id": " dummy-switzerland-id-dummy-dummy-report-2022-05-01-01-23-45",
        "UserId": "user@example.com",
        "UserName": "Example User",
        "Comment": "my test comment",
        "HitHorizonsId": null,
        "Email": "user@example.com",
        "Price": 1,
        "Country": "Switzerland",
        "CompanyCode": "ID-Dummy",
        "CompanyName": "Dummy Company",
        "CompanyAddress": "Dummy street 1, Dummy City",
        "ProductName": "Dummy Credit Report",
        "Provider": "Dummy",
        "Submitted": "2022-05-01T01:23:45.0000000Z",
        "Started": "2022-05-01T01:24:45.0000000Z",
        "Finished": "2022-05-01T01:25:45.0000000Z",
        "Failed": null,
        "FailureReason": null,

```

```

        "CreditRefunded": false,
        "Results": null
    }
],
"ResultsCount": 1,
"TotalCount": 6,
"Page": 1,
"PageSize": 1
}
}

```

6.23.ENDPOINT /Reports/GetCountries

Starter

Grow

Pro

This endpoint allows you to retrieve countries where reports or documents can be ordered, along with the information about available providers in each country.

6.23.1. Request parameters

There are no request parameters for this endpoint.

6.23.2. Response parameters

The endpoint returns a `Dictionary<string, ReportCountryInfo>`. The string keys are the country names.

ReportCountryInfo		
CountryName	string	Country name.
AvailableProviders	string array	Array of providers available in this country.

6.23.3. Example request

```

GET https://api.hithorizons.com/Reports/GetCountries HTTP/1.1
Host: api.hithorizons.com
Ocp-Apim-Subscription-Key: .....

```


6.23.4. Example response

```
Content-Type: application/json; charset=utf-8
{
  "Success": true,
  "Error": null,
  "Result": {
    "albania": {
      "CountryName": "albania",
      "AvailableProviders": [
        "Kyckr",
        "Propartner",
        "CofaceV2"
      ]
    },
    "andorra": {
      "CountryName": "andorra",
      "AvailableProviders": [
        "Propartner"
      ]
    },
    ...
  }
}
```

6.24.ENDPOINT /Reports/GetCreditInfo

Starter

Grow

Pro

This endpoint allows you to check the credit information.

6.24.1. Request parameters

There are no request parameters for this endpoint.

6.24.2. Response parameters

CreditInfo		
CurrentCredit	Decimal	Current credit in EUR available for ordering documents and reports.

6.24.3. Example request

```
GET https://api.hithorizons.com/Reports/GetCreditInfo HTTP/1.1
Host: api.hithorizons.com
Ocp-Apim-Subscription-Key: .....
```

6.24.4. Example response

```
Content-Type: application/json; charset=utf-8
{
  "Success": true,
  "Error": null,
  "Result": {
    "CurrentCredit": 100.00
  }
}
```

7. API CHANGES POLICY

Changes to the API which are considered backward compatible can be deployed at any time and without prior notice.

Breaking changes in the API will be announced in advance and in certain cases, the API will be versioned to allow consuming both old and new versions at the same time.

Examples of breaking changes:

- Addition of a required request parameter without specifying a default value.
- Change of data type in request parameter or response field.
- Removal of a field from a response.
- Removal of an endpoint.

Examples of non-breaking, backward-compatible changes:

- Addition of an optional request parameter or a required request parameter with a default value.
- Addition of new fields in responses.
- Addition of new endpoints.
- Changes to HTTP response/error messages.

8. API HISTORY

Date	Change description
2 Dec 2024	<ul style="list-style-type: none"> • Added YouTubeURL to endpoint /Company/Search and /Company/SearchLite • Added HasYouTubeURL and YouTubeURL to /Screener/List and /Screener/Export • Added YouTubeURLs to endpoint /Company/Detail, /Company/DetailBasic, /Company/DetailBasicMulti, /Company/Search, /Company/SearchUnstructured, /Screener/List and /Screener/Export
12 Nov 2024	<ul style="list-style-type: none"> • Added IncludeUnknownSales and IncludeUnknownEmployees in endpoints /Screener/List and /Screener/Export
31 Oct 2024	<ul style="list-style-type: none"> • Support null value for LocationType in endpoints /Screener/List and /Screener/Export
6 Sep 2024	<ul style="list-style-type: none"> • Added country codes to all responses with country information • Added extended contact information (emails and phones) • Added social networking links for: Instagram, TikTok, X, and GitHub
24 May 2024	<ul style="list-style-type: none"> • Added FacebookURL to /Screener/List and /Screener/Export • Added FacebookURL to endpoint /Company/Search and /Company/SearchLite
22 Apr 2024	<ul style="list-style-type: none"> • Added FacebookURLs to endpoint /Screener/List • Added HasFacebookURL to /Screener/List and /Screener/Export • Added FacebookURLs to endpoint /Company/Detail, /Company/DetailBasic, /Company/DetailBasicMulti, /Company/Search, /Company/SearchUnstructured
31 Jan 2024	<ul style="list-style-type: none"> • Added region, LinkedInURLs, TopProductKeywords to endpoint /Screener/List • Added HasLinkedInURL, LinkedInURL to /Screener/List and /Screener/Export • Added LinkedInURLs to endpoint /Company/Detail, /Company/DetailBasic, /Company/DetailBasicMulti, /Company/Search, /Company/SearchUnstructured • Added LinkedInUrl to endpoint /Company/Search and /Company/SearchLite • Contact finder limits updated
2 Nov 2023	<ul style="list-style-type: none"> • Added support for Product Keywords to endpoints /Company/Detail, /Company/DetailBasic and /Company/DetailBasicMulti • Added support for searching using VAT numbers, websites and email domains • Added websites, email domains, company types and location types to search results • Added endpoints /Company/CodeLists and /Company/CodeLists/LocalActivityCodes • Parameter Ids in endpoints /Company/SearchUnstructured and /Company/SearchLiteUnstructured can now contain an array of values

2 May 2023	<ul style="list-style-type: none"> • Added support for yearly API limits
13 Apr 2023	<ul style="list-style-type: none"> • Added /Company/DetailBasicMulti endpoint • Added /Company/SearchLite endpoint • Added /Company/SearchLiteUnstructured endpoint • Added support for field HitHorizonsIds in /Screener/List and /Screener/Export endpoints
3 Mar 2023	<ul style="list-style-type: none"> • Added LocalActivityCode and LocalActivityCodeType to /Screener/List and /Screener/Export parameters • Added LocalActivityCode and LocalActivityCodeType fields to results in /Company/Search and /Company/SearchUnstructured endpoints • United Kingdom is joined into a single country (previously England, Northern Ireland, Scotland, and Wales) • Added information about Contact Finder limits
16 Dec 2022	<ul style="list-style-type: none"> • Added LocalActivityText to /Company/Detail and /Company/DetailBasic endpoints
23 May 2022	<ul style="list-style-type: none"> • Added support for Reports functionality (endpoints /Reports/SearchCompanies, /Reports/SearchProducts, /Reports/OrderProduct, /Reports/GetOrder, /Reports/GetOrders, /Reports/GetCountries, /Reports/GetCreditInfo)
10 Mar 2022	<ul style="list-style-type: none"> • Added support for screener exports (endpoints /Screener/Export, /Screener/GetExport, /Screener/GetExports)
28 Feb 2022	<ul style="list-style-type: none"> • Added support for supplying multiple countries to endpoints /Company/Search, /Company/SearchUnstructured, /Company/Suggestions, /Screener/List, /Screener/FilterOptions/StateProvince • Added support for using the country code "GB" and country name "United Kingdom" in the above endpoints
19 Feb 2022	<ul style="list-style-type: none"> • Updated documentation to reflect changed API infrastructure
13 Dec 2021	<ul style="list-style-type: none"> • Added API Screener functionality: • Added /Screener/List endpoint • Added /Screener/FilterOptions endpoint • Added /Screener/FilterOptions/StateProvince endpoint • Added support for searching by Postal Code in /Company/Search endpoint
18 Nov 2021	<ul style="list-style-type: none"> • Added VAT validation support • Added Contact Finder support

28 Oct 2021	<ul style="list-style-type: none"> • Added field TaxId to the endpoints /Company/Detail, /Company/DetailBasic, /Company/Search, /Company/SearchUnstructured • Support searching by TaxId in /Company/Search and /Company/SearchUnstructured
11 Oct 2021	<ul style="list-style-type: none"> • Added field PostalCode to the endpoint /Company/Suggestions
7 Oct 2021	<ul style="list-style-type: none"> • Added support for fields Country and SkipSuggestions to the endpoint /Company/Suggestions
4 Oct 2021	<ul style="list-style-type: none"> • Added top companies to the endpoint /Analytics/Sector
3 Sep 2021	<ul style="list-style-type: none"> • Renamed endpoint /Company/Get to /Company/Detail. • Renamed endpoint /Company/GetBasic to /Company/DetailBasic. • The old endpoints are still available to maintain backward compatibility.
17 May 2021	<ul style="list-style-type: none"> • Added SICCode field to the results of /Company/Search and /Company/SearchUnstructured • Added fields Websites and EmailDomains to endpoints /Company/Get and /Company/GetBasic • Added support for country code in Country field in endpoint /Company/Search
6 Apr 2021	<ul style="list-style-type: none"> • Added fields Website and EmailDomain to endpoints /Company/Get and /Company/GetBasic
19 Feb 2021	<ul style="list-style-type: none"> • Added endpoint /Company/GetBasic. • Added endpoint /Company/Suggestions. • Added endpoint /Analytics/Sector
5 Feb 2021	<ul style="list-style-type: none"> • Comma-separated list of values supported for parameter CompanyTypes in endpoints /Company/Search and /Company/SearchUnstructured • Added API Changes Policy
June 2020	<ul style="list-style-type: none"> • New parameters: <ul style="list-style-type: none"> • EmployeesNumberLocal • EmployeesNumberLocal AccuracyIndicator • Changes: <ul style="list-style-type: none"> • Region eu28 renamed to eu27 • Region noneu28 renamed to noneu27 • Countries reassigned to noneu27: England, Gibraltar, Northern Ireland, Scotland and Wales

October 2019

- Version 1 of the API launched

Technical support

For technical support please contact us via email support@hithorizons.com.